



Publish Faster. Publish Smarter.

www.ariessys.com

This material contains information that is proprietary and confidential to Aries Systems. It cannot be shared with third parties without Aries Systems' consent. ARIES SYSTEMS PROPRIETARY & CONFIDENTIAL. DO NOT COPY. DO NOT DISTRIBUTE.

EMUG 2023



Courtyard Boston Downtown Hotel
June 14-15, 2023

Aries
systems.



EMUG 2023

LiXuid Manuscript: End-to-End Production Solution

Charles O'Connor
Lead Product Manager
coconnor@ariessys.com

Agenda

Welcome to
EMUG: Day 2

#EMUG2023

- Limitations in Traditional Production
- Alternative Production Workflow with LiXuid
- Introducing New Tools: End-to-End Production
- Content is Data
- Live Demonstration
- The LiXuid Long-term Vision
- Resources
- Questions from Attendees

This material contains information that is proprietary and confidential to Aries Systems. It cannot be shared with third parties without Aries Systems' consent. ARIES SYSTEMS PROPRIETARY & CONFIDENTIAL. DO NOT COPY. DO NOT DISTRIBUTE.

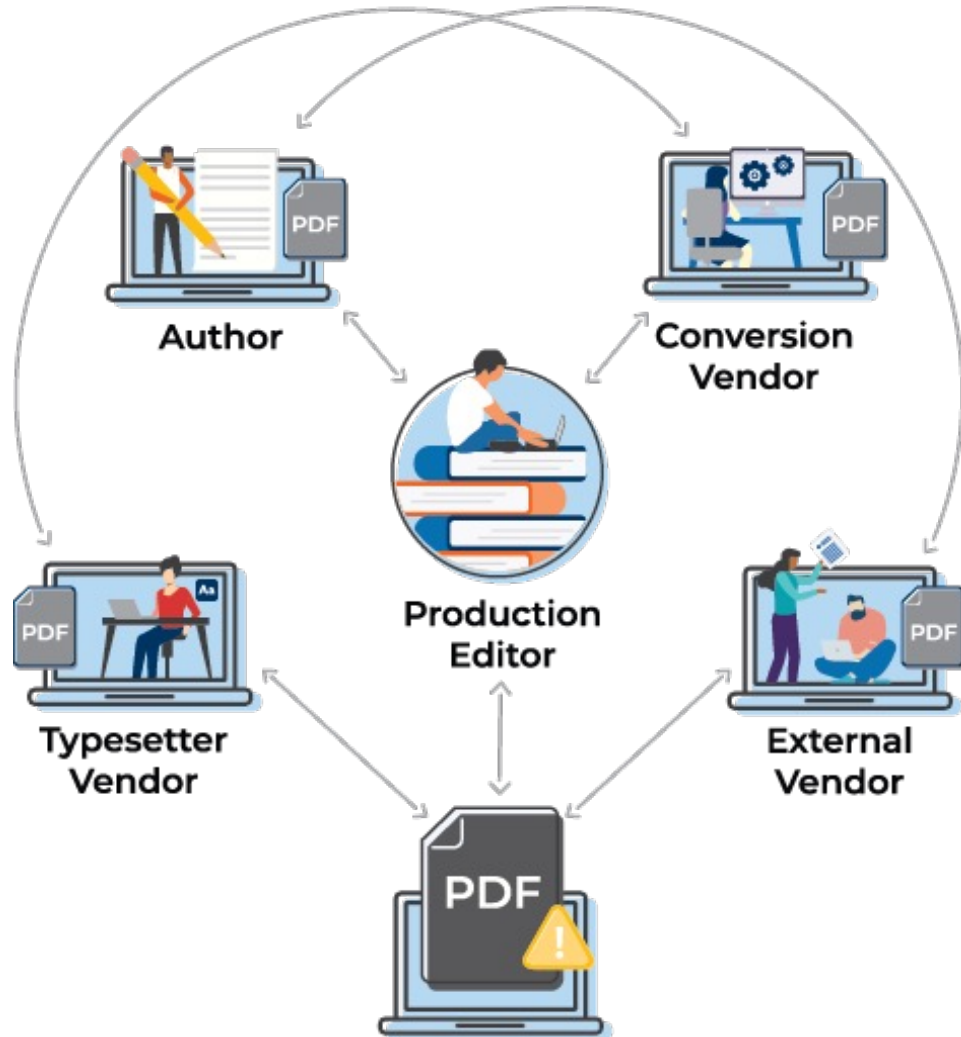




Limitations in Production Today

Identifying gaps & challenges

Traditional Production Workflow

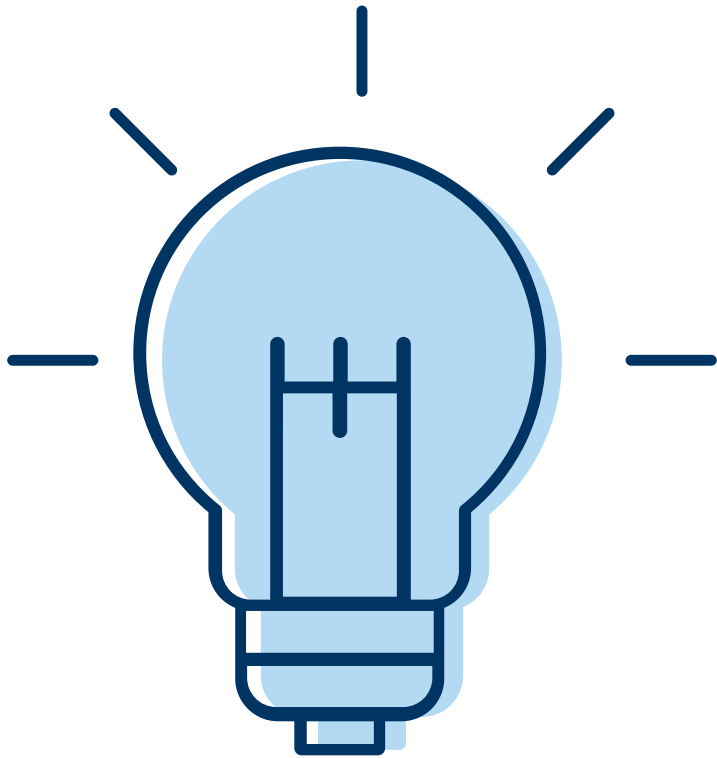


- Shuffles static, unstructured content between Authors, copyeditors, production staff, and vendors across disparate systems
- Word documents or PDFs used

Limitations in Traditional Production

- X** Disparate systems causing workflow disruption
- X** Time consuming manual processes
- X** Increased costs – inhouse and outsourced
- X** Frustrating delays
- X** Risk to quality and version control
- X** Limited control over important metadata
- X** Static content is not machine readable or accessible





Production of Tomorrow

Introducing LiXuid Manuscript

LiXuid: Unlock the Production Experience

LiXuid Manuscript™ feature:

- Suite of tools to streamline production workflow
- Transforms unstructured, static content (Word doc, PDF) into structured, dynamic data
- Makes content more machine-readable and accessible
- Powered by Aries' workflow management solutions
- Leverages XML technology behind-the-scenes (no user XML expertise required!)



Production Workflow Powered by LiXuid

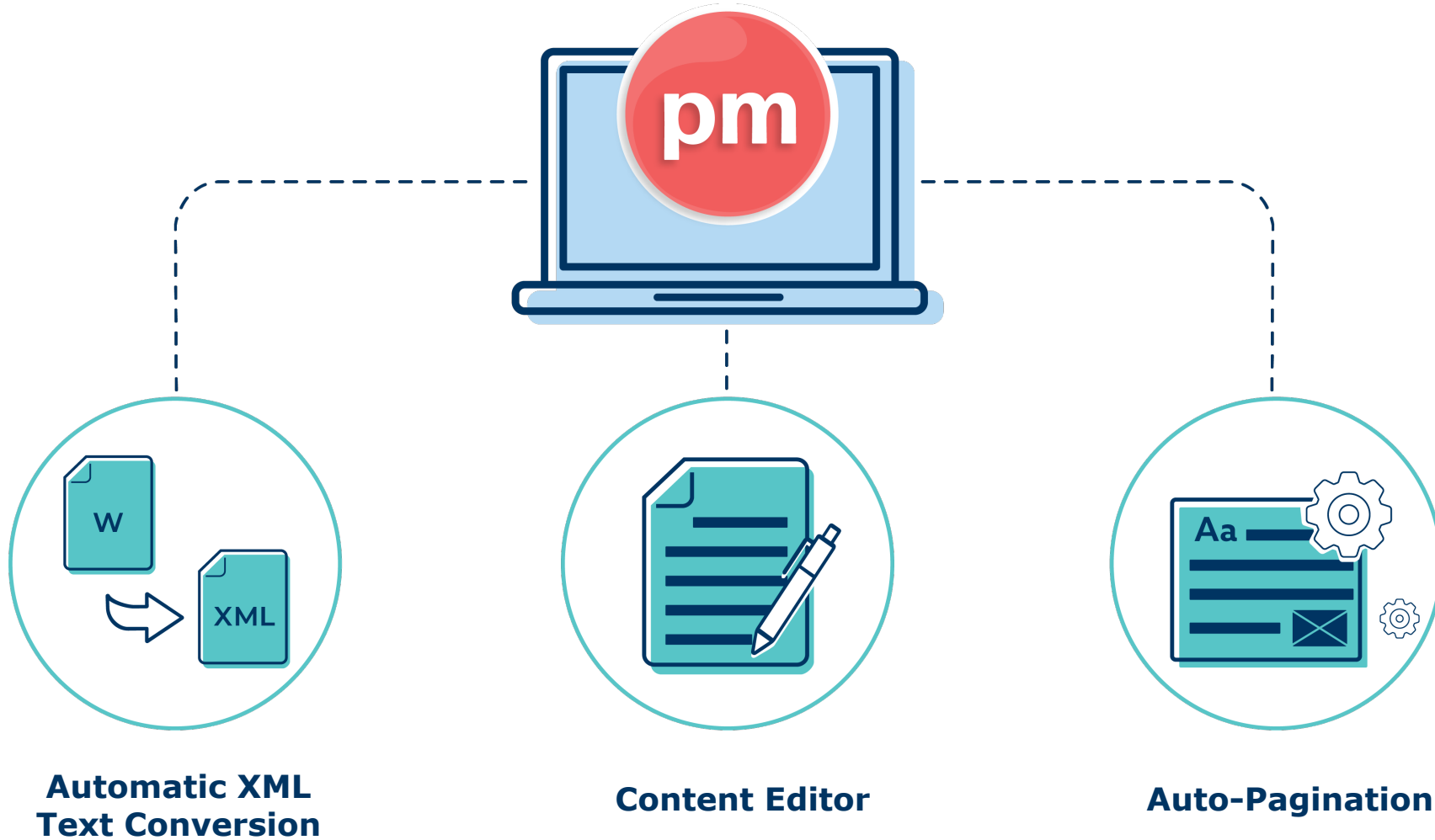


- ✓ Seamless, centralized solution
- ✓ Gives control back to the experts
- ✓ Time and cost-effective
- ✓ Improves content quality
- ✓ Enhances user experience

End-to-End Solution: Production and Beyond



LiXuid Manuscript Production Toolset





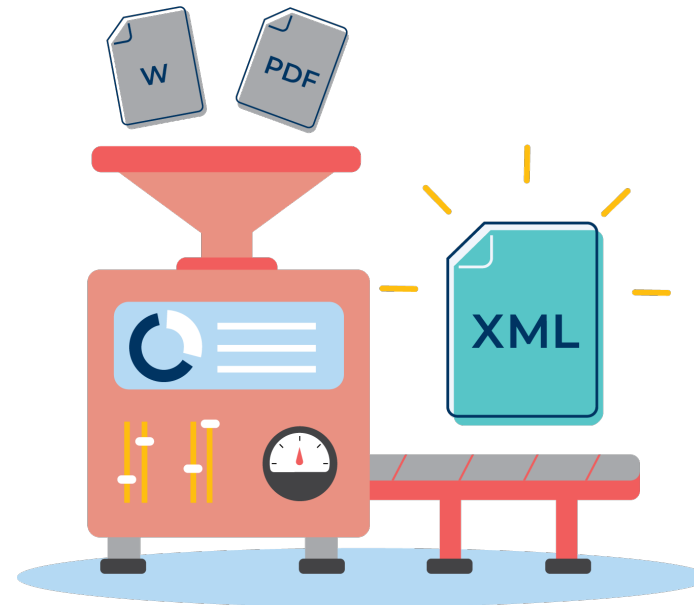
LiXuid Manuscript Suite

A closer look at the toolset

Auto-Text Conversion

via DCL
integration

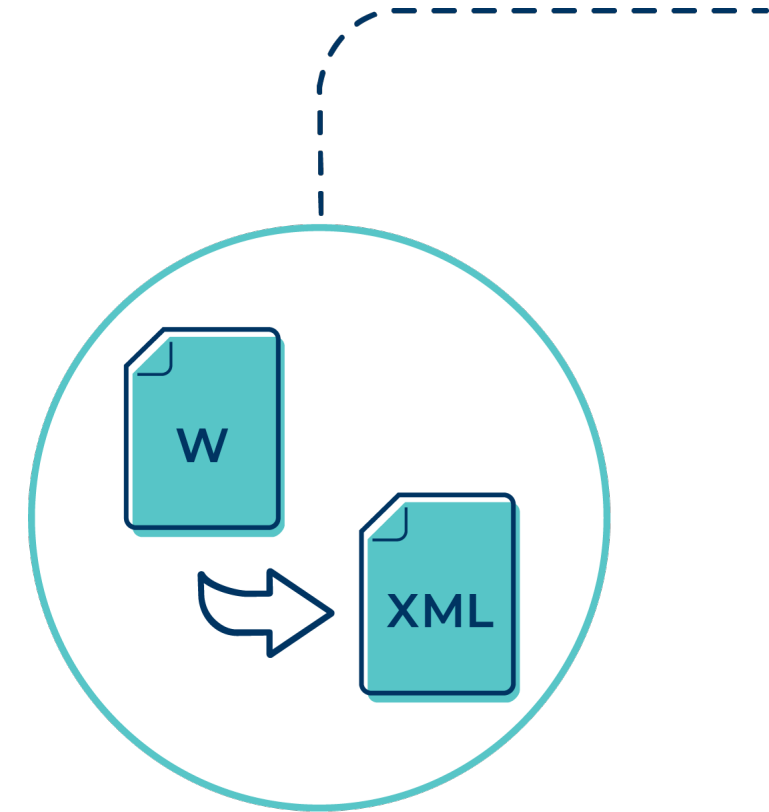
- Automatic transformation of content: unstructured (Word/PDF/LaTeX) to structured (XML)
- Industry-compliant Aries JATS XML
- Triggered via production task
- Transmittal XML metadata carries over from editorial



This material contains information that is proprietary and confidential to Aries Systems. It cannot be shared with third parties without Aries Systems' consent. ARIES SYSTEMS PROPRIETARY & CONFIDENTIAL. DO NOT COPY. DO NOT DISTRIBUTE.

Automatic XML Text Conversion Benefits

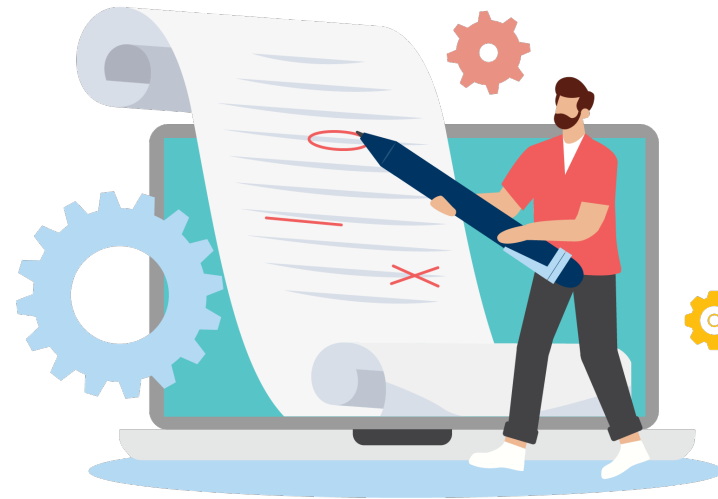
- ✓ Enables dynamic content and workflow
- ✓ Consistent formatting through production, publication, and beyond
- ✓ Eliminates need for expensive conversion vendors/staff
- ✓ Reduces frustrating delays and inaccuracies, resulting in faster turn-around times and improved quality
- ✓ Better control and accessibility of key metadata
- ✓ Improved user experience for Editors and production staff



Content Editing Interface

via Fonto XML integration

- User-friendly, Word processor-like environment
- Journal-style agnostic, highly-configurable
- Visible change/edit tracking
- Alerts inconsistencies and required corrections
- Enter and answer direct Author/Editor queries
- Automatically validates underlying XML in real time

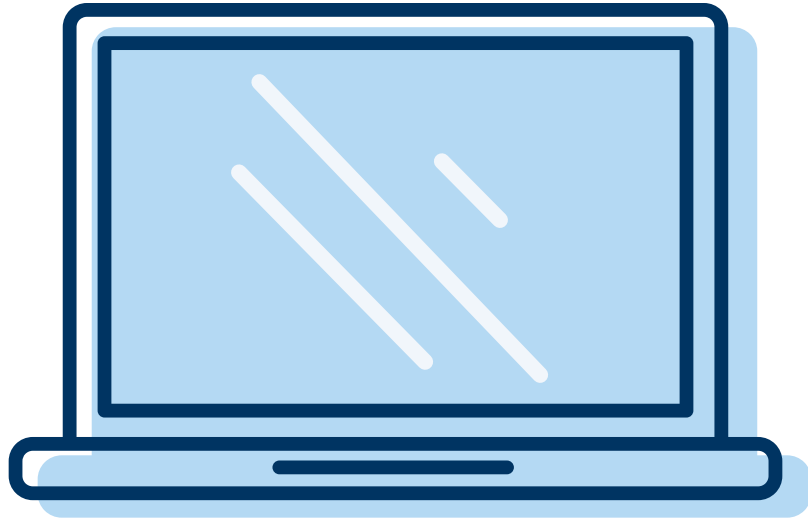


This material contains information that is proprietary and confidential to Aries Systems. It cannot be shared with third parties without Aries Systems' consent. ARIES SYSTEMS PROPRIETARY & CONFIDENTIAL. DO NOT COPY. DO NOT DISTRIBUTE.

Content Editing Tool Benefits

- ✓ Fewer errors and rounds of edits between copyeditors, Authors, and production staff
- ✓ Eliminates need for expensive external vendors
- ✓ Reduces costs and time to publication
- ✓ Increases quality and version control
- ✓ Intuitive and improved Author and Editor experience





Live System Demonstration

LiXuid Manuscript in action!

Auto- pagination

via Typefi
integration

- Automatically paginates articles in journal's print style from XML and finished graphics
- Customizable templates
- Triggered by a production task
- Packages the PDF, InDesign file, fonts, and graphics into a zip file for delivery to printers

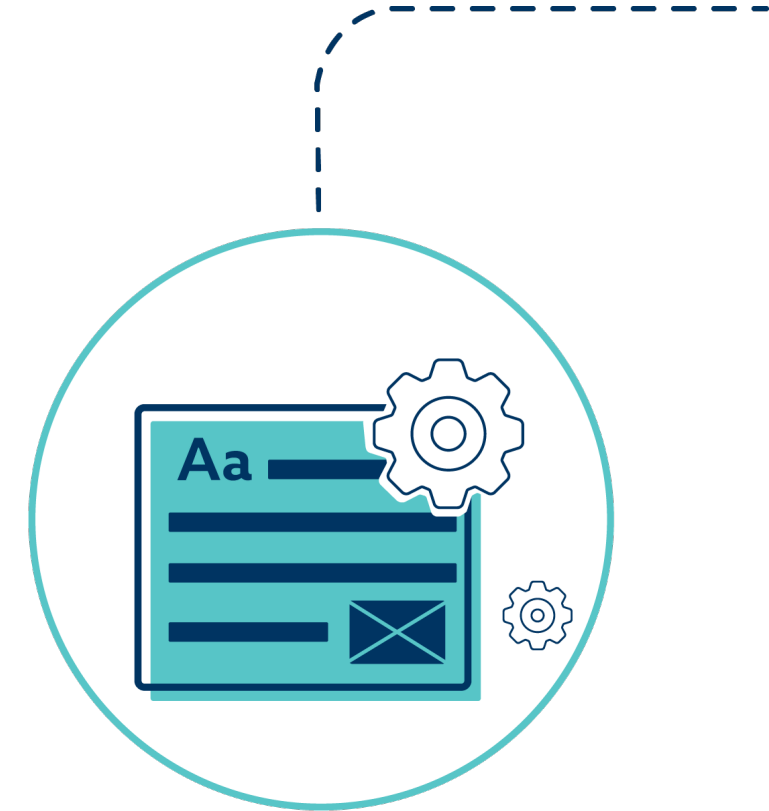


This material contains information that is proprietary and confidential to Aries Systems. It cannot be shared with third parties without Aries Systems' consent. ARIES SYSTEMS PROPRIETARY & CONFIDENTIAL. DO NOT COPY. DO NOT DISTRIBUTE.



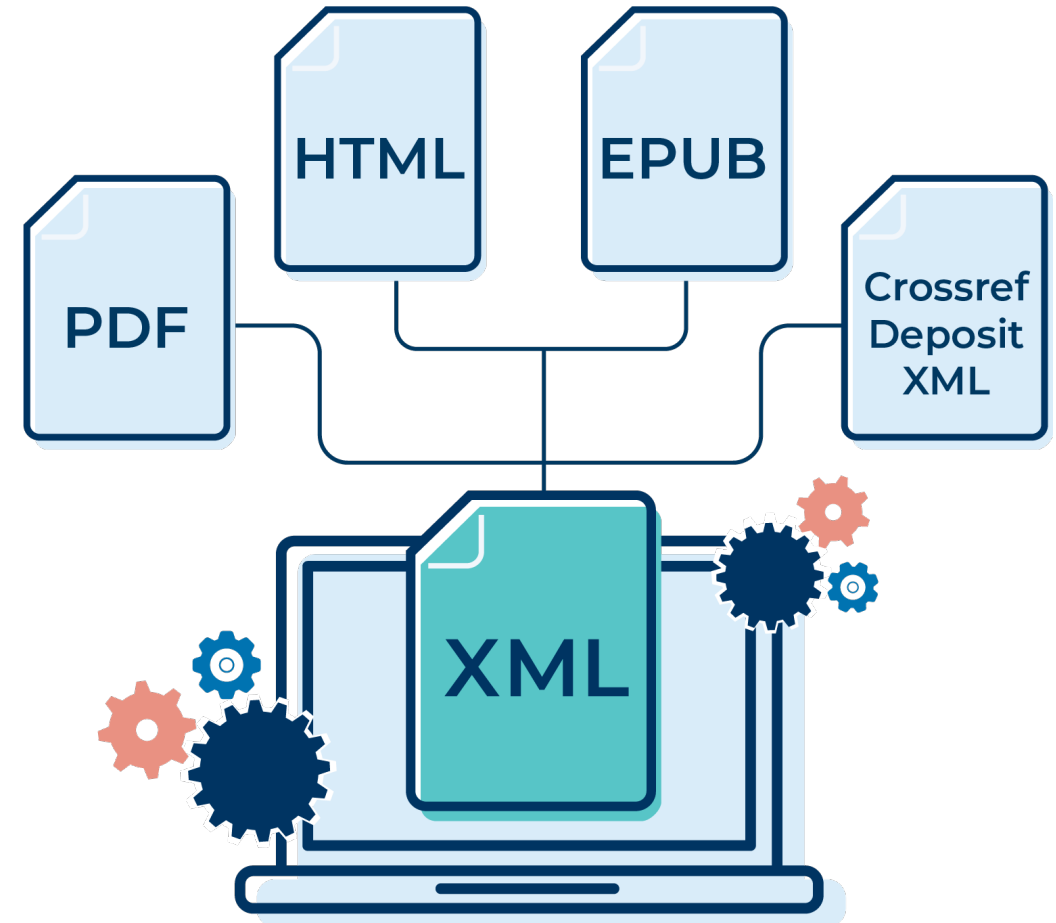
Automatic Pagination Benefits

- ✓ Reduced cost and time to publication
- ✓ Eliminates need for expensive typesetter
- ✓ Automatic - No human intervention needed
- ✓ Enhanced production staff user experience
- ✓ No XML or InDesign expertise required



Content is Data: Transformation

- Create "Secondary" Products
 - HTML
 - CrossRef Deposit XML
 - EPUB
 - PDF



Content is Data: Copyediting

Perform Rote Copyedit Tasks

- Format Citations
- Units of Measure
- British-to-American Spelling
- Capitalize Headings



Content is Data: Quality Control (QC)

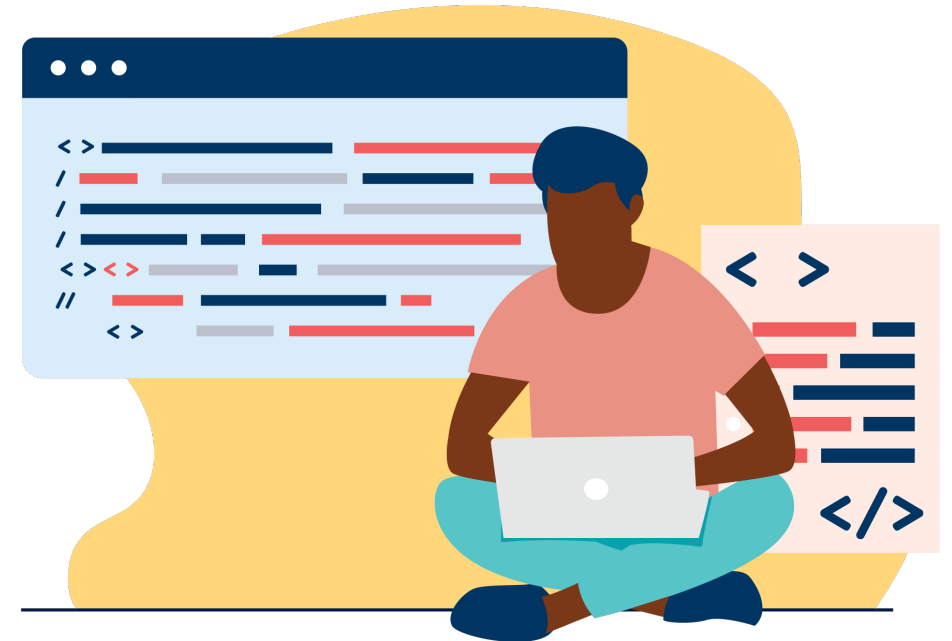
What is on Your QC Checklist?

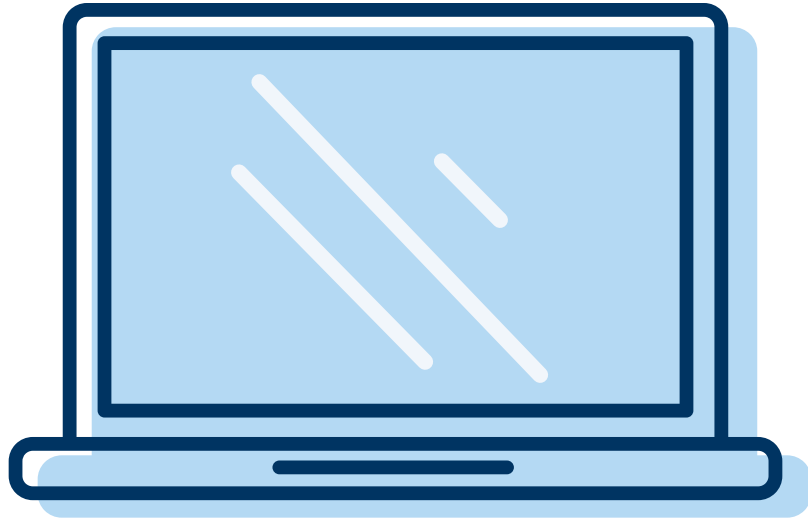
- Are all tables and figures cited?
- Is the abstract over 200 words?
- Do all authors have affiliations?
- Have authors declared a conflict-of-interest?
- Has the author used any flagged words?
- Is there a data-availability statement?



Content is Data: Metadata

- Update Content from EM/PM Fields
 - Title, Abstract, Volume, Pub Dates, DOI, etc.
 - Any Additional Manuscript Detail Field
- Update Content from Transmittal (during XML Conversion)
 - ORCIDs, Funding Information, etc.
- Update EM/PM Fields from Content
 - Title, Abstract, Volume, Pub Dates, etc.





Live System Demonstration (continued)

LiXuid Manuscript in action!

LiXuid Vision: Expanding to Peer Review

- Supports Any Peer Review Model
- Concurrent Reviewer/Editor Commenting
- Revisions Can Be Made in the Editor
- See Comments in Revised or Original Context

The screenshot displays a document editor interface. The main text area contains two paragraphs. The first paragraph discusses uncertainty and hypotheses, with the word 'understanding' highlighted in purple. The second paragraph discusses the challenge of recognizing value changes, with a citation '(Raiffa and Schlaifer 1961)'. Below this is a section header '2 Decision making under structural uncertainty' and a third paragraph starting with 'A framework for the expected value of sample information...'. A comment box is overlaid on the right side of the document, showing a comment from 'You' dated 'May 12, 2023, 6:14 PM'. The comment type is 'Editorial comment', and the text of the comment is 'To support this assertion, you should cite the foundational study by Longnamington et al. 2020.' The comment box includes a 'Type' dropdown menu with options for 'General comment', 'Editorial comment' (selected), and 'Technical comment', along with 'Cancel' and 'Save' buttons.

understanding. Uncertainty about how the resource system works is expressed by means of different hypotheses (models) about the system and its responses to management actions. Each model has a measurable likelihood of being the most appropriate, based on current information and understanding (Williams et al. 2002).

The challenge in such a situation is to recognize and measure the change in value resulting from an increase in information and understanding. A broadly accepted measure of change is given by a comparison of optimal valuation produced with additional information, against optimal valuation in its absence (Raiffa and Schlaifer 1961). An understanding of the change in value enables assessment of cost-effectiveness in targeting uncertainty with additional research or monitoring.

OTHER2 SECTION

2 Decision making under structural uncertainty

A framework for the expected value of sample information under dynamic decision making applies to resources that are subject to management through time. Both resource status and management interventions are seen as fluctuating through time, with the system state and action at time t influencing system behavior going forward. Here we summarize the components of

1 Decisions, returns, and uncertainty

You May 12, 2023, 6:14 PM

Editorial comment *

To support this assertion, you should cite the foundational study by Longnamington et al. 2020.

Type *

General comment

Editorial comment

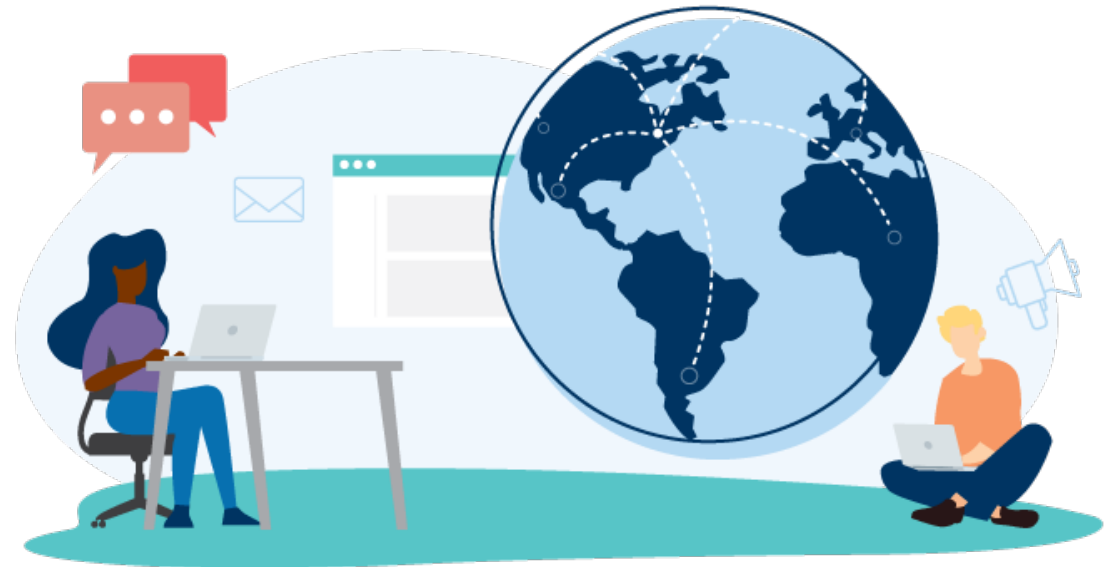
Technical comment

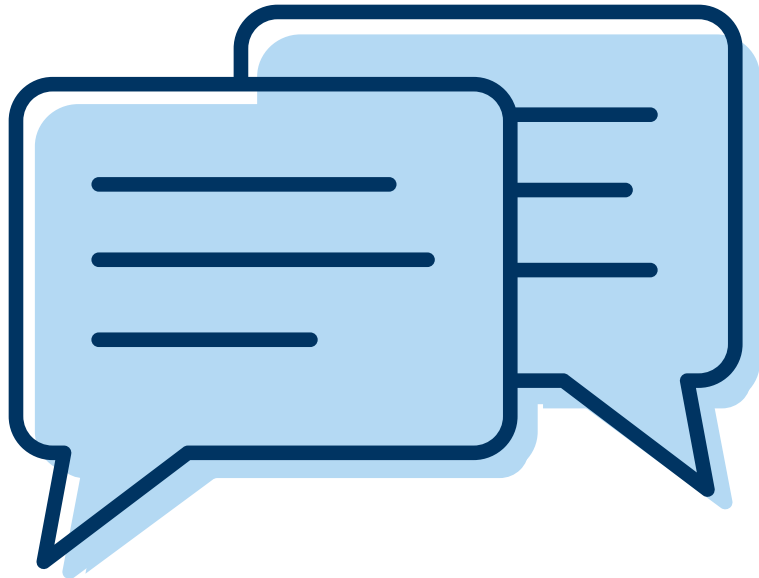
Cancel Save



Resources

- Aries Video Library:
 - [LiXuid Manuscript: A Limitless Production Experience](#)
 - [LiXuid Manuscript: Direct Content Editing](#)
- Your Account Coordinator





Questions?

Thank you!

Stay Connected

Charles O'Connor
Lead Product Manager
coconnor@ariessys.com

This material contains information that is proprietary and confidential to Aries Systems. It cannot be shared with third parties without Aries Systems' consent. ARIES SYSTEMS PROPRIETARY & CONFIDENTIAL. DO NOT COPY. DO NOT DISTRIBUTE.





50 High Street, Suite 21
North Andover, MA 01845 USA

www.ariessys.com

This material contains information that is proprietary and confidential to Aries Systems. It cannot be shared with third parties without Aries Systems' consent. ARIES SYSTEMS PROPRIETARY & CONFIDENTIAL. DO NOT COPY. DO NOT DISTRIBUTE.