



Publish Faster. Publish Smarter.

[www.ariessys.com](http://www.ariessys.com)

*This material contains information that is proprietary and confidential to Aries Systems. It cannot be shared with third parties without Aries Systems' consent. ARIES SYSTEMS PROPRIETARY & CONFIDENTIAL. DO NOT COPY. DO NOT DISTRIBUTE.*

# EMUG 2023



**Courtyard Boston Downtown Hotel**  
**June 14-15, 2023**

**Aries**  
systems.



# EMUG 2023

## Research Integrity Innovations

---

Elysia Williams

Senior Account Manager

Ewilliams@ariessys.com

# Agenda

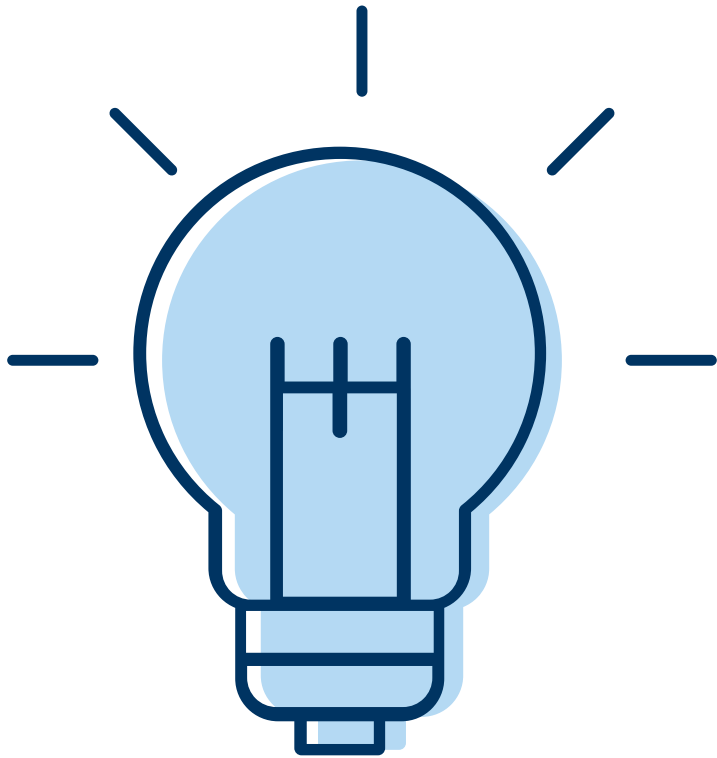
---

## Welcome to EMUG: Day 2

- Introduction to Research Integrity
- Research Integrity Innovations
  - Reproducibility
  - Plagiarism
  - Reference Validation
  - Researcher Identity
  - Transparency
- Resources
- Questions from Attendees







# Introduction to Research Integrity

*Importance, Common  
Concerns, and Buy-in*

# Research Integrity: Importance

- The Scholarly Record is what we have as “truth” in academic disciplines
- Contaminated truth can harm attempts to replicate data or create existence of falsehood in what we understand to be knowledge
  - Congressional inquiry into Aduhelm drug for Alzheimer's  
<https://www.nytimes.com/2022/12/29/health/alzheimers-drug-aduhelm-biogen.html>
  - Link between vaccines and autism = "Fake news"  
<https://www.npr.org/sections/health-shots/2011/01/06/132703314/study-linking-childhood-vaccine-and-autism-was-fraudulent>



# Research Integrity: Common Concerns

- Plagiarism of content
- Falsification or fabrication of data
- Manipulated images
- Author disputes
- Conflicts of interest
- Bias



# Research Integrity: Editor Buy-In

- Create guardrails to make ethics easy
- Automated tools in EM
- "Editorial Friction"
  - Make it hard for bad actors to do the wrong thing
  - Make it easy for Authors to do the right thing!





# Research Integrity Innovations

*The Aries Ecosystem*

# The Aries Ecosystem: Integrated Solutions

- Connects users with best-in-class tools and services, all in one place and directly within workflow
- Comprised of both Aries and third-party technology that plug into EM and/or PM
- Enables publishers to address new initiatives and workflow/quality gaps without additional investment
- Continuously evolving to meet needs of the industry



# The Aries Ecosystem: Research Integrity

- There are many tools and services within the Aries ecosystem that support research integrity!
- Visit the Aries website to explore tools available across all branches of the Aries ecosystem!
  - Discover helpful resources and information on each tool in the ecosystem





# Research Integrity Innovations

*Reproducibility*



# Reproducibility

- 8% of researchers in Dutch survey have falsified or fabricated data

<https://www.nature.com/articles/d41586-021-02035-2>

- Spider biologist – copy pasting data

- 15 papers have been retracted so far; including a Nature article in 2023

<https://www.science.org/content/article/university-investigation-found-prominent-spider-biologist-fabricated-falsified-data>



# Reproducibility

## When data is open, other scientists can question the outcome

- Dr. Marc Hauser, evolutionary biologist at Harvard University
  - Cotton-top tamarins able to recognize themselves when looking in mirror
  - Questioned by other researcher; video tape evidence "incomplete"; could not reproduce results

<https://www.bostonglobe.com/metro/2014/05/29/internal-harvard-report-shines-light-misconduct-star-psychology-researcher-marc-hauser/maSUowPqL4clXrOgj44aKP/story.html>



# Research Integrity Innovations

---

## Reproducibility

- **Dimensions Research Integrity Precheck**
  - Measures and critiques manuscripts' research quality, professionalism, and reproducibility
- **SciScore**
  - Evaluates manuscript's methods section to measure rigor and reproducibility of research
- **CheckCIF**
  - Reports on consistency and integrity of crystallography represented in submitted CIF files

*This material contains information that is proprietary and confidential to Aries Systems. It cannot be shared with third parties without Aries Systems' consent. ARIES SYSTEMS PROPRIETARY & CONFIDENTIAL. DO NOT COPY. DO NOT DISTRIBUTE.*



# Dimensions Research Integrity preCheck

## Research

- Automated identification of a clear study objective is a key way in which Dimensions Research Integrity preCheck differentiates research papers from other types of papers (for example, a commentary)

## Professionalism

- Automated checks of the authorship, ethical statement, and funders present in a manuscript

## Reproducibility

- Automated identification of key reproducibility variables, such as the availability of code, data, and analysis software



# Dimensions Research Integrity preCheck

- Depending on the configuration settings, Editors may have a new link in the Action menu in the New Submissions Requiring Assignment folder called "Manuscript Analysis Services":

Page: 1 of 1 (18 total submissions)

Action	Manuscript Number	Article Type	Section Category	Article Title	Author Name	Initial Date Submitted	Status Date	Current Status
<a href="#">View Submission</a> <a href="#">Manuscript Analysis Services</a> <a href="#">Details</a> <a href="#">Initiate Discussion</a> <a href="#">History</a> <a href="#">File Inventory</a> <a href="#">Edit Submission</a> <a href="#">Send Back to Author</a> <a href="#">Remove Submission</a> <a href="#">Classifications</a> <a href="#">Assign Editor</a> <a href="#">Set Final Disposition</a> <a href="#">Send E-mail</a> <a href="#">Linked Submissions</a>								
		Research Article	Basic Science Section	Test-5	mary mary	Jun 21, 2022	Jun 21, 2022	Manuscript Submitted



# Dimensions Research Integrity preCheck

- Accessing a paper where Dimensions Research Integrity preCheck report is already available:

**Manuscript Analysis Services - Submission "Test-5"**

The table below lists the results returned from each Manuscript Analysis Service available on this site.

Click the "Send for Analysis" link to send this submission for analysis to any service from which results have not yet been retrieved.

When results are returned from an analysis service, one or both of the following links will be displayed:

- **Download Report Files** - click this link to download the reports returned by the service
- **Go to Report** - click this link to view the report within the external analysis service system

**⚠ Results from one or more analysis services require your attention. Click the link in the Actions column to view the results**

Manuscript Analysis Services

Analysis Service	Date	Revision	Triggered By	Status	Actions	Scores
preCheck ⚠	Aug 08, 2022	0	Raquel Ripeta [Managing Editor]	Complete	<a href="#">Go To Report</a>	

[Close](#)



# Dimensions Research Integrity preCheck



## Paper review results

Clinical significance and prognostic value of the expression of fibronectin type III domain containing 3B in pancreatic carcinoma

Report generated: 2023-Jun-02

## Transparency

### Author Contributions Statement

*Authors' contributions LQM, XHL, KXD and XQK designed the study, downloaded data from TCGA, performed KEGG enrichment analysis and KM survival analysis, and drafted the manuscript. JLL and HHL were responsible for GO Page 7/18 enrichment analysis and OS analysis. XYL and JG were responsible for ROC curve analysis. All authors read and approved the final manuscript for publication.*

💡 PreCheck says: We were able to find a statement declaring author contributions. This is important to verify the authenticity of the authors involved in the work carried out. The author contributions let the publishers, editors, and readers know that researcher history, manuscript graph, author affiliation, and author contact details are accurate. We recommend the use of the CRediT taxonomy (<https://credit.niso.org/>) to represent the roles typically played by contributors to research outputs.

### Conflict of Interests Statement

*Competing interests The authors declare that they have no competing interests. Funding This study was funded by Fujian Province Natural Science Foundation (grant number 2018J01266) and Joint Funds for the Innovation of Science and Technology, Fujian Province (grant number 2017Y9074).*

💡 PreCheck says: We have found a statement declaring competing interest(s) or lack of it in the paper. Competing exists when the authors' interpretation of data or presentation of information may be influenced by their personal or financial relationship with other people or organizations. To prevent bias in articles, authors are always required to provide their target journal with a competing interest statement, in which they declare potential conflicts of interest that could interfere with their full capacity of being perfectly objective regarding their research and manuscript. For additional details on conflict of interests see these resources from COPE: <https://publicationethics.org/competinginterests>.

### Data Locations

*Availability of data and material The datasets generated during and/or analyzed during the current study are available from the corresponding author on reasonable request.*

💡 PreCheck says: We found a data availability statement indicating you made your data available upon request. Please consider putting data and materials in an accessible repository unless there is information that includes sensitive, ethical, or commercial concerns. Having data easily accessible has been shown to increase the number of citations to your article. This also assists in making your work reproducible. For guidelines on where to share data, please review this blog post: [10.6084/m9.figshare.14923899.v1](https://10.6084/m9.figshare.14923899.v1)





# SciScore

- Depending on the configuration settings, Editors may have a new link in the Action menu in the New Submissions Requiring Assignment folder called "Manuscript Analysis Services":

Page: 1 of 1 (17 total submissions)

Action	Manuscript Number	Article Type	Section Category	Article Title	Author Name	Initial Date Submitted	Status Date	Current Status
<a href="#">View Submission</a> <a href="#">Manuscript Analysis Services</a> <a href="#">Duplicate Submission Check (30 Days)</a> <a href="#">Details</a> ▾ <a href="#">Initiate Discussion</a> <a href="#">History</a> <a href="#">File Inventory</a> <a href="#">Edit Submission</a> <a href="#">Send Back to Author</a> <a href="#">Remove Submission</a> <a href="#">Classifications</a> <a href="#">Assign Editor</a> <a href="#">Set Final Disposition</a> <a href="#">Send E-mail</a> <a href="#">Linked Submissions</a>								
		Original Study	Basic Science Section	Zooms 12V 200Ah LiFePO4 Battery	mike chiu	Aug 03, 2021	Aug 03, 2021	Manuscript Submitted





# SciScore

## Materials

<b>Antibodies</b>	<b>Yes (indicate where provided: page no/section/legend)</b>	<b>n/a</b>
For commercial reagents, provide supplier name, catalogue number and RRID, if available	No antibodies detected. Please add identifiers for all resources where possible	
<b>Cell Materials</b>	<b>Yes (indicate where provided: page no/section/legend)</b>	<b>n/a</b>
<b>Cell lines:</b> Provide species information, strain. Provide accession number in repository OR supplier name, catalog number, clone number, OR RRID	No cell lines detected Please add identifiers for all resources where possible	
<b>Primary cultures:</b> Provide species, strain, sex of origin, genetic modification status.	Not currently checked by SciScore	
<b>Experimental Animals</b>	<b>Yes (indicate where provided: page no/section/legend)</b>	<b>n/a</b>
<b>Laboratory animals:</b> Provide species, strain, sex, age, genetic modification status. Provide accession number in repository OR supplier name, catalog number, clone number, OR RRID	No organisms detected Please add identifiers for all resources where possible	

## Design

<b>Study protocol</b>	<b>Yes (indicate where provided: page no/section/legend)</b>	<b>n/a</b>
For clinical trials, provide the trial registration number OR cite DOI in manuscript.	Not detected.	
<b>Laboratory protocol</b>	<b>Yes (indicate where provided: page no/section/legend)</b>	<b>n/a</b>
Provide DOI or other citation details if detailed step-by-step protocols are available.	Not detected.	

- Returns a zip file with reports:



- Uses Materials Design Analysis Reporting framework

# Configuration: Dimensions Research Integrity preCheck & SciScore

- Once enabled, go to Policy Manager > Edit Article Type

The screenshot shows a configuration panel for "Manuscript Analysis Services". The panel title is "Manuscript Analysis Services:" and it contains the instruction: "Send submissions with this Article Type to the following Manuscript Analysis Services at the selected events." Under the heading "Sciscore:", there is a list of five events with checkboxes: "New Submission" (checked), "Technical Check Completion" (unchecked), "First Editor Assignment" (unchecked), "First Revision" (unchecked), and "All Revisions" (checked). Two blue callout boxes with arrows provide context: the left box points to the first three options and states "The first three options are triggered manually from the Action menu"; the right box points to the last two options and states "The other options trigger the API call automatically when the manuscript reaches R1 (First Revision) or R1 and up (All Revisions)".

**Manuscript Analysis Services:**

Send submissions with this Article Type to the following Manuscript Analysis Services at the selected events.

**Sciscore:**

- New Submission
- Technical Check Completion
- First Editor Assignment
- First Revision
- All Revisions

The first three options are triggered manually from the Action menu

The other options trigger the API call automatically when the manuscript reaches R1 (First Revision) or R1 and up (All Revisions)

- Contact your Account Coordinator if interested in using Dimensions Research Integrity preCheck, SciScore or any of our other [Manuscript Analysis](#) tools designed to improve research quality




# Configuration Steps: Multiple Article Types

### Edit Article Types

submission, conference submissions, proposal creation, invited submissions, commentaries and submissions

Order	Article Type	Article Type Family	Editor/Publish		Remove	Edit
			Invited	Use Only		
1	Original Study	Regular				
2	Editorial	Regular				
4	Review	Regular				
5	Rapid Communication	Regular				
7	Case Report	Regular				
8	Letter to the Editor	Regular				
9	Commentary	Regular	✓			
10	Special Issue	Proposal				
11	Special Issue Article	Regular	✓			
12	Annual Meeting Abstract	Conference Submission				



### Select the Article Types you would like to update:

[Select All](#) | [Clear All](#)

- Original Study
- Editorial
- Review
- Rapid Communication
- Case Report
- Letter to the Editor
- Commentary

To open or close a configuration category, click anywhere in the header. Open a category to view the settings it contains.  
Check the "Update This Category" box to apply all settings within the category to the selected Article Types when this page is submitted.

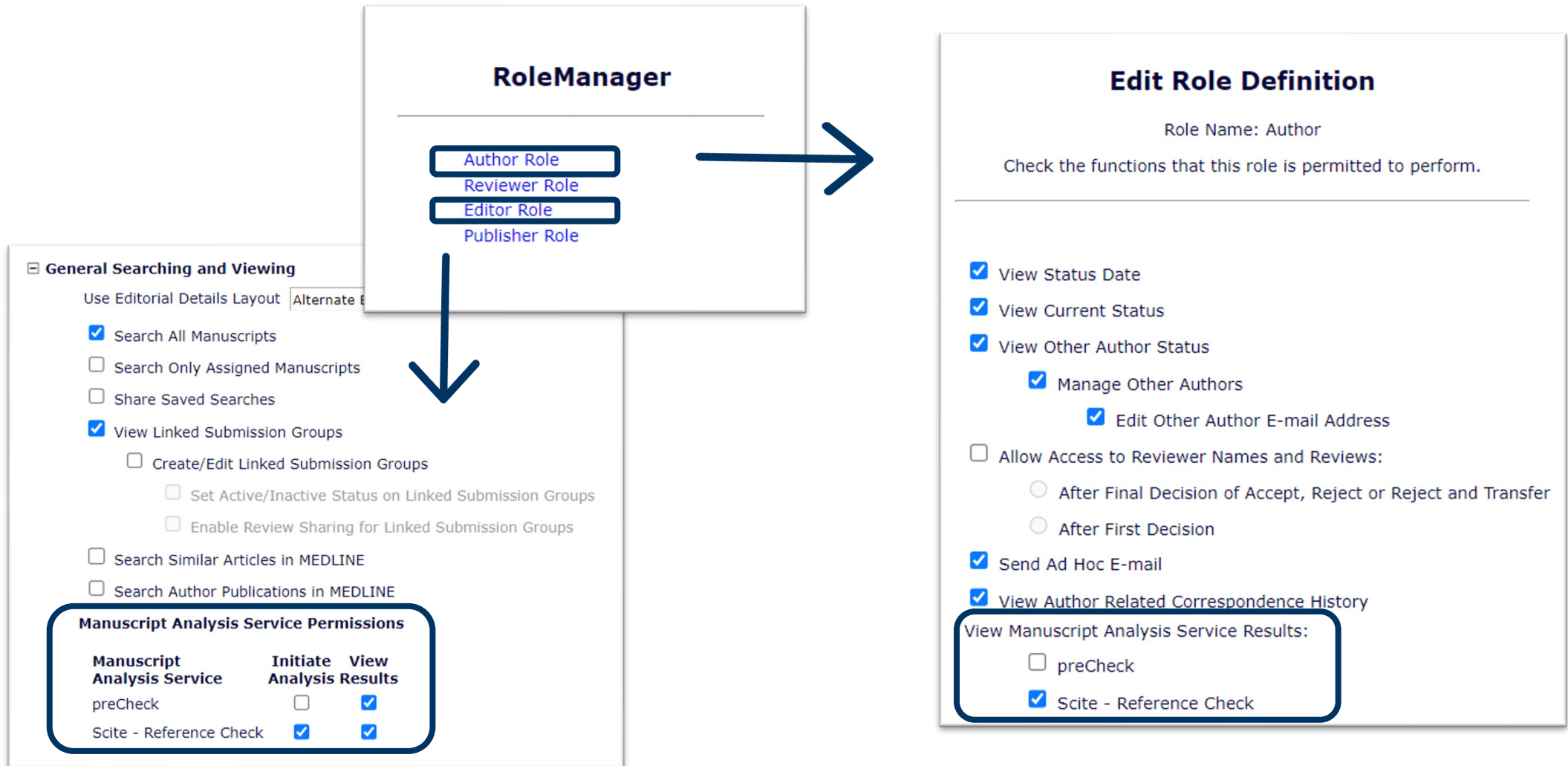
- Manuscript Analysis Services**
- Sciscore**  Update This Category

Send submissions to this Manuscript Analysis Service at the following events:

- New Submission
- Technical Check Completion
- First Editor Assignment
- First Revision
- All Revisions



# Configuration Steps: Viewing results



# CheckCIF

- Specialized tool for journals in the Crystallography field
- Provided by the International Union of Crystallography to examine files with .cif extension (Crystallographic Information Format)
- Reports on the **consistency** and **integrity** of crystal structure determinations
- EM/PM sends .cif file asynchronously to the API version of the tool hosted by the IUCr at key workflow points (and when a Companion File configured to go to the tool is uploaded)
  - A PDF report on the file's contents is generated and returned using an API



# CheckCIF Results

## Submission Files

Select	Item Type	Item Description	File Name	Size	Date Tested	Actions	checkCIF Results
	CIF	CIF	1.cif	77.60 KB	Apr 13, 2023	<a href="#">Download</a>	Completed
	CIF	CIF	2.cif	146.30 KB	Apr 13, 2023	<a href="#">Download</a>	Completed
	CIF	CIF	3.cif	96.20 KB	Apr 13, 2023	<a href="#">Download</a>	Completed
	CIF	CIF	4.cif	109.60 KB	Apr 13, 2023	<a href="#">Download</a>	Completed

Click here to access/download  
CIF  
2.cif

### checkCIF/PLATON report

No syntax errors found. CIF dictionary Interpreting this report

Datablock: hubu-lb-wtt-fe3etoh

```

Bond precision:  C-C = 0.0044 A           Wavelength=1.54184
Cell:             a=8.7807(2)           b=12.5902(3)           c=13.7137(3)
                  alpha=103.344(2)      beta=106.821(2)       gamma=104.749(2)
Temperature:      293 K

Volume           Calculated           Reported
1325.29(6)
Space group      P -1                       P -1
Hall group       -P 1                       -P 1
Moiety formula   C32 H18 N4 S4           C32 H18 N4 S4
Sum formula      C32 H18 N4 S4
Mr               586.74
Dx, g cm-3       1.470
Z                2
Mu (mm-1)        3.540
F000             604.0
F000'            608.00
h, k, lmax       10, 15, 16             10, 15, 16
Nref             4743
Tmin, Tmax       0.688, 0.703           0.561, 1.000
Tmin'            0.470
    
```

### Alert level G

FORMU01\_ALERT\_1\_G There is a discrepancy between the atom counts in the `_chemical_formula_sum` and `_chemical_formula_moiety`. This is usually due to the moiety formula being in the wrong format.

- **ALERT level A** = Most likely a serious problem - resolve or explain
- **ALERT level B** = A potentially serious problem, consider carefully
- **ALERT level C** = Check. Ensure it is not caused by an omission or oversight
- **ALERT level G** = General information/check it is not something unexpected

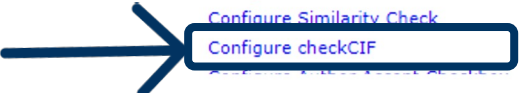


# Configuration Steps: CheckCIF

PolicyManager > Submission Policies > Configure checkCIF

oleManager   ActionManager   PolicyManager   AdminManager   Administration Help

- Submission Policies
  - Edit Article Types
  - Edit Submission Items
  - Configure Color Codes for Companion Files
  - Edit Sections/Categories
  - Set Classifications Display Policy
  - Edit Classifications
  - Edit Request Authenticated ORCID iD Instructions
  - Define PDF Cover Page Layouts
  - Configure PDF Watermarks
  - Select Author's Reviewer Preferences
  - Set Request Editor or Assign Editor Display Option
  - Edit Manuscript Geographic Region of Origin
  - Edit Manuscript Submission Instructions
  - Edit Legacy Manuscript Submission Instructions
  - Configure Instructions for New Submission Redire
  - Configure Manuscript Services Icon
  - Set Maximum Size of Uploaded File
  - Set Other Author Parameters
  - Configure Contributor Roles
  - Set Revision File Selection Option
  - Configure Duplicate Submission Check
  - Configure Technical Check
  - Configure Similarity Check
  - Configure checkCIF**



Enable checkCIF

Select the workflow points that will trigger checkCIF:

<input checked="" type="checkbox"/>	Original PDF Building By Author
<input checked="" type="checkbox"/>	Original PDF Building By Editor
<input type="checkbox"/>	First Reviewer Invited/Assigned for Original Submission
<input checked="" type="checkbox"/>	Revised PDF Building By Author
<input checked="" type="checkbox"/>	Revised PDF Building By Editor
<input type="checkbox"/>	Author Notified of Editor Decision in the 'Accept' Decision Family
<input type="checkbox"/>	Author Notified of Editor Decision in the 'Revise' Decision Family
<input type="checkbox"/>	Create Submission

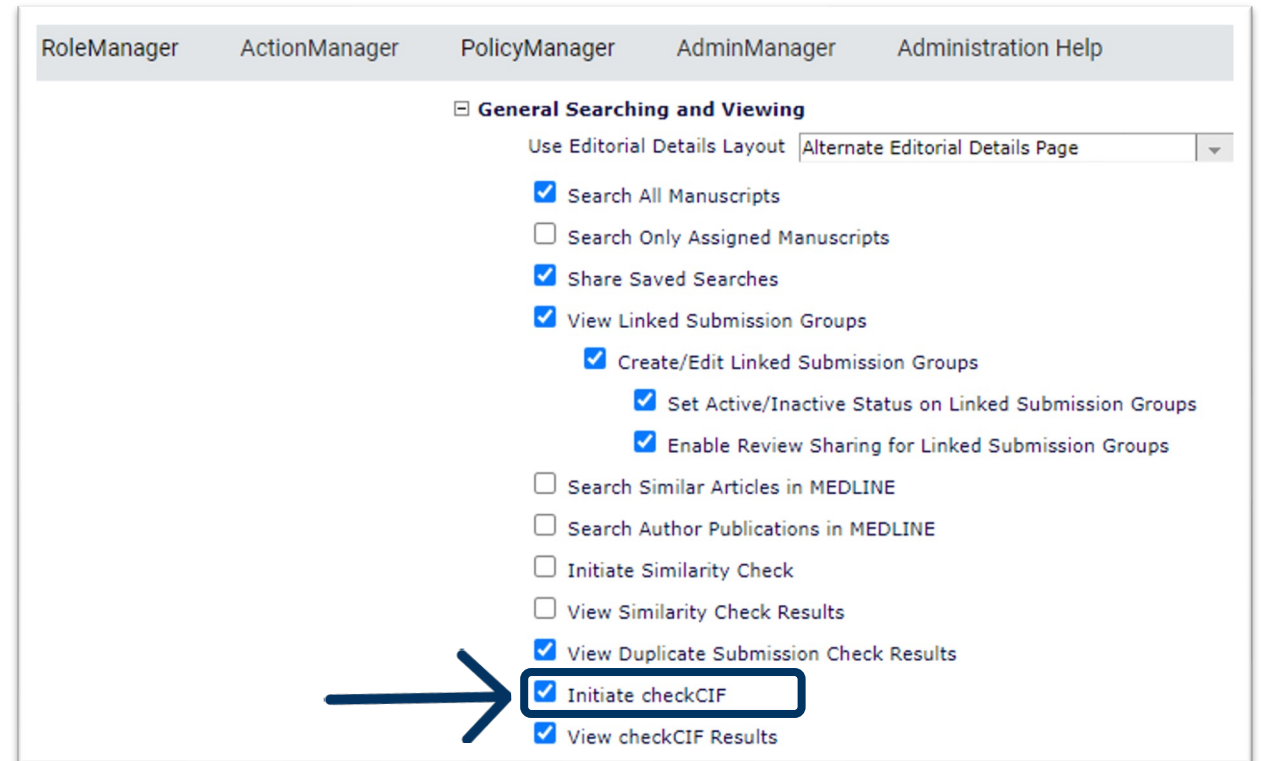
Page	Instructions
View checkCIF Results	<p><a href="#">Insert Special Character</a></p> <p>The files shown below are eligible for analysis using the checkCIF tool from the International Union of Crystallography (IUCr). If the files have already been sent to the checkCIF tool, the analysis report can be viewed by clicking the 'Completed' link.</p> <p><a href="#">View Default Instructions</a> <span style="float: right;"><a href="#">Revert to Default Instructions</a></span></p>



# Configuration: checkCIF

## RoleManager > Initiate checkCIF

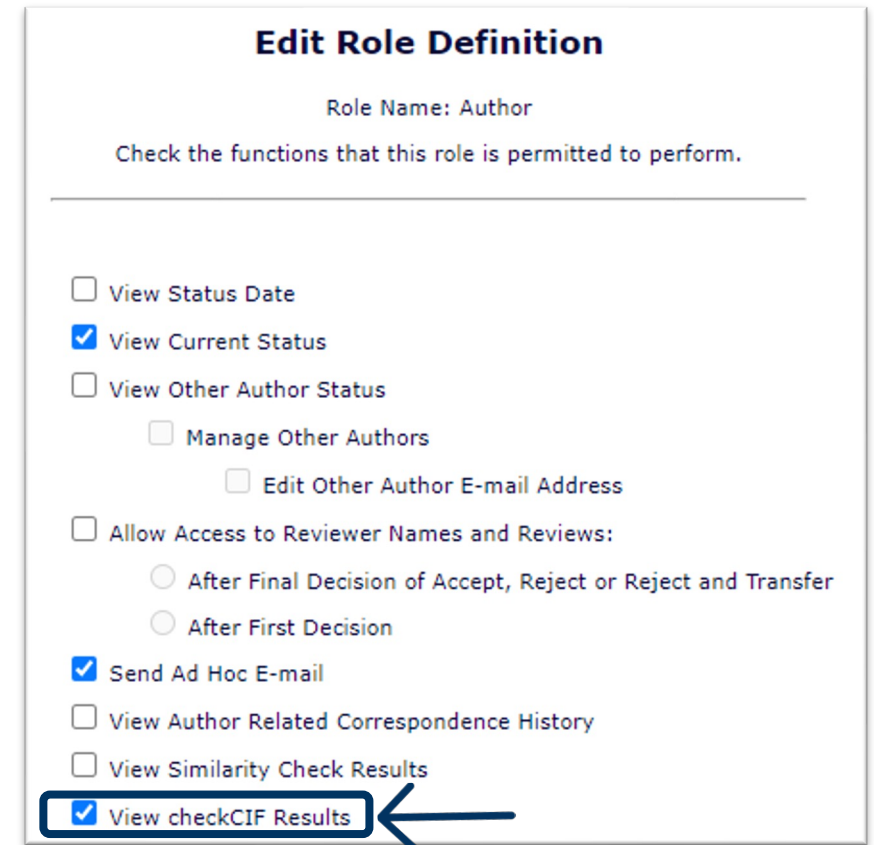
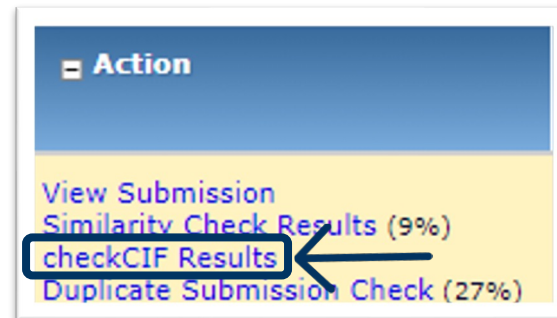
- Editors/Publishers with permissions will be able to manually send the .cif files (or re-send the files, in the case of an error) to the checkCIF tool
- Multiple files per submission may be sent to checkCIF





# Configuration Steps: CheckCIF

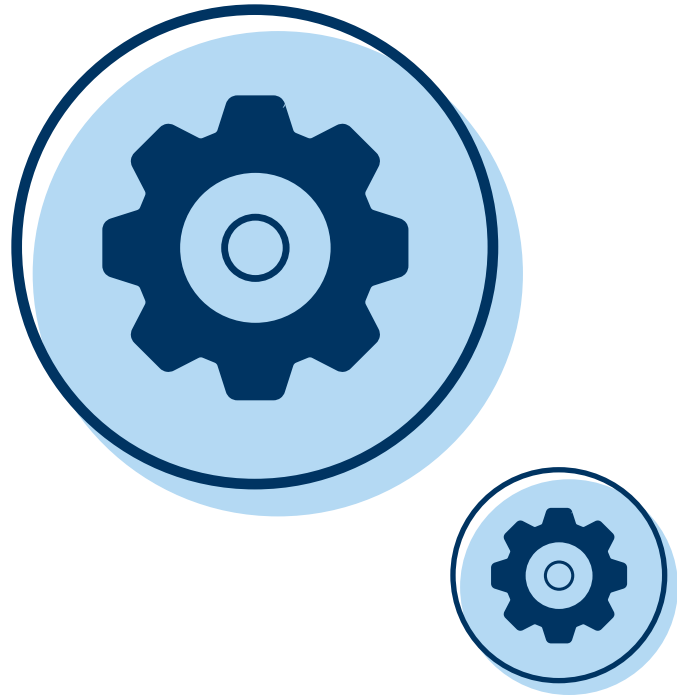
- Report is downloadable by Authors, Editors, Reviewers and Publishers who have 'View checkCIF Results' RoleManager permission, and from the system PDFs for all users with access to the PDFs
- Note: the results file is downloadable from the PDF only if the .cif file itself is configured to be built into the PDF as a hyperlink *and* the file has results



A screenshot of the 'Edit Role Definition' form for the 'Author' role. The form title is 'Edit Role Definition' and the role name is 'Author'. Below the title, it says 'Check the functions that this role is permitted to perform.' The form contains several checkboxes and options:

- View Status Date
- View Current Status
- View Other Author Status
  - Manage Other Authors
  - Edit Other Author E-mail Address
- Allow Access to Reviewer Names and Reviews:
  - After Final Decision of Accept, Reject or Reject and Transfer
  - After First Decision
- Send Ad Hoc E-mail
- View Author Related Correspondence History
- View Similarity Check Results
- View checkCIF Results

A blue rectangular box highlights the 'View checkCIF Results' checkbox, and a blue arrow points from the right side of the box to the text.



# Research Integrity Innovations

*Plagiarism*

# Research Integrity Innovations

## Plagiarism & Duplicates

- **Similarity Check**

- Compares submitted content to published articles to detect potential plagiarism

- **Duplicate Submission Check**

- Compares submitted content to other manuscripts previously submitted to the journal



*This material contains information that is proprietary and confidential to Aries Systems. It cannot be shared with third parties without Aries Systems' consent. ARIES SYSTEMS PROPRIETARY & CONFIDENTIAL. DO NOT COPY. DO NOT DISTRIBUTE.*

# Similarity Check

- Checks files to see if they are similar to published content
- Collaboration between CrossRef and turnitin (iThenticate)



- Integration method: API
- Must be CrossRef Member
- Resources:
  - <https://www.crossref.org/service/similarity-check/>
  - Aries Video on Similarity Check integration: <https://www.ariessys.com/blog/similarity-check-helping-editors-with-automated-plagiarism-detection-in-editorial-manager/>

# Similarity Check

## Linked report:

**LATE PALEOZOIC–EARLY MESOZOIC GRANITOIDS IN THE KHANGAY–KHENTEY BASIN, CENTRAL MONGOLIA: IMPLICATION FOR THE TECTONIC EVOLUTION OF THE MONGOL–OKHOTSK OCEAN MARGIN**

Ariuntsetseg Ganbat <sup>(1,2,\*)</sup> [ariun.0602@gmail.com](mailto:ariun.0602@gmail.com)  
Tatsuki Tsujimori <sup>(1,3)</sup> [tatsukix@tohoku.ac.jp](mailto:tatsukix@tohoku.ac.jp)  
Laicheng Miao <sup>(4)</sup> [miaolc@mail.iggcas.ac.cn](mailto:miaolc@mail.iggcas.ac.cn)  
Inna Safonova <sup>(5,6)</sup> [inna03-64@mail.ru](mailto:inna03-64@mail.ru)  
Daniel Pastor-Galán <sup>(1,3,7)</sup> [dpastorgalan@gmail.com](mailto:dpastorgalan@gmail.com)  
Chimedtseren Anaad <sup>(2,9)</sup> [chimedtserena@yahoo.com](mailto:chimedtserena@yahoo.com)  
Munktsengel Baatar <sup>(2,8)</sup> [tsengel@must.edu.mn](mailto:tsengel@must.edu.mn)  
Shogo Aoki <sup>(10,11)</sup> [s-aoki@gipc.akita-u.ac.jp](mailto:s-aoki@gipc.akita-u.ac.jp)  
Kazumasa Aoki <sup>(11)</sup> [kazumasa@das.ous.ac.jp](mailto:kazumasa@das.ous.ac.jp)  
Ilya Savinsky <sup>(5)</sup> [ilya.savinsky@gmail.com](mailto:ilya.savinsky@gmail.com)

<sup>(1)</sup> Department of Earth Science, Graduate School of Science, Tohoku University, Aoba, Sendai 980-8578, Japan  
<sup>(2)</sup> Geoscience Center, Mongolian University of Science and Technology, Ulaanbaatar 120646, Mongolia  
<sup>(3)</sup> Center for Northeast Asian Studies, Tohoku University, Aoba, Sendai 980-8576, Japan  
<sup>(4)</sup> Institute of Geology and Geophysics, Chinese Academy of Sciences, Beijing 100029, China  
<sup>(5)</sup> Novosibirsk State University, Pirogova St. 1, Novosibirsk, 630090, Russia  
<sup>(6)</sup> Sobolev Institute of Geology and Mineralogy, SB RAS, Koptyuga ave. 3, Novosibirsk, 630090, Russia  
<sup>(7)</sup> Frontier Research Institute for Interdisciplinary Sciences, Tohoku University, Aoba, Sendai 980-0845, Japan  
<sup>(8)</sup> Mongolian University of Science and Technology, Ulaanbaatar 120646, Mongolia

Sources Overview

41%

OVERALL SIMILARITY

1 Flag

41% Overall Similarity

- 1 agupubs.onlinelibrary... INTERNET 2%
- 2 Ariuntsetseg Ganbat, T... CROSSREF 2%
- 3 www.tandfonline.com INTERNET 2%
- 4 hdl.handle.net INTERNET 1%
- 5 mafadoc.com INTERNET 1%
- 6 pericles.pericles-prod.l... INTERNET 1%
- 7 Mingshuai Zhu, Fochin... CROSSREF 1%
- 8 onlinelibrary.wiley.co... INTERNET <1%

## New in Version 2:

### suspicious or hidden character detection

A new 'Red flag' feature, highlighted at the top right hand side of the Similarity report and with in-line markers, signals the detection of hidden text such as text/quotation marks in white font or suspicious character replacement e.g., the substitution of a Latin e for a Cyrillic e or a Latin o for a Greek o, which may have been deliberately added to avoid text-matching detection.

224 with increasing seismicity. It should be noted that these correlations are only present when canyons  
225 are binned by geographic location, and not when taken individually or binned by UTM-zone,  
226 indicating significant local variation or dilution of the correlation across drainage basins (Fig. S3).

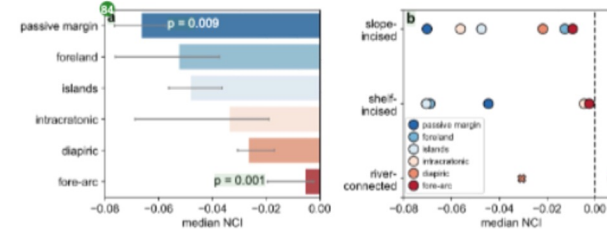


Figure 7: A) Median NCI values for canyons formed in each basin type. Error bar indicates 68 % confidence interval. B) Median NCI values for each basin type grouped by their position on the slope. River-associated canyons formed on active margins more convex than shelf- and slope-incised canyons formed on active margins.

227

### 3.2 Canyon position

228 Canyon position also plays a role in adjusting concavity. Slope-incised and shelf-incised submarine  
229 canyons, which at present day are dissociated from rivers, have less variation in concavity (std. dev.  
230 = 0.10) than shelf-incised submarine canyons with a present-day connection to a river system (std.  
231 dev. = 0.13) (Harris and Whiteway, 2011). Shelf-incised and slope-incised canyons are more  
232 statistically similar (Fig. 6C). Where the number of river-associated, shelf-incised, and slope-incised  
233 canyons is greater than 10 for an individual basin-type (forearc basins), river-association appears

Red flag feature: Hidden characters in the iThenticate v2.0 Similarity report



# Configuration Steps: Similarity Check

Enable Automatic Transfer to Similarity Check (powered by iThenticate)

Use the following Similarity Check version:

Version 1  
 Version 2

API Key:

API Url:

---

Highlight Similarity Scores that exceed:

Similarity Score Threshold:  %

## PolicyManager > Configure Similarity Check

- Enter publisher's access credentials and destination folder
- Highlight Similarity Scores that exceed x%
- Customize instructions for results page

Report Parameters	
Setting	Description
<input type="checkbox"/> Exclude Quotes	If checked, text in quotes will not count as similar content.
<input checked="" type="checkbox"/> Exclude Bibliography	If checked, text in a bibliography section will not count as similar content.
<input type="checkbox"/> Exclude Abstract	If checked, text in the abstract section of the submission will not count as similar content.
<input checked="" type="checkbox"/> Exclude Methods	If checked, text in the methods section of the submission will not count as similar content.
<input type="checkbox"/> Exclude Small Matches	If set, similarity matches that match fewer than the specified number of words will not count as similar content. The minimum value of this field is 8 words.
<input type="checkbox"/> Exclude Internet	If checked, text matched to the internet collection will not count as similar content.
<input checked="" type="checkbox"/> Exclude pre-prints	If checked, it will exclude a predefined set of pre-print sources. A pre-print is a version of a scholarly or scientific paper that precedes formal peer review and publication in a peer-reviewed scholarly or scientific journal.
<input type="checkbox"/> Exclude Publications	If checked, text matched to the publication collection will not count as similar content.
<input type="checkbox"/> Exclude Citations	If checked, the text in inline citations in the APA, MLA, and Turabian style formats, will not count as similar content.
<input type="checkbox"/> Exclude Crossref Publications	If checked, the text matched to the Crossref publications collection will not count as similar content.
<input type="checkbox"/> Exclude Crossref Posted Content	If checked, the text matched to the posted content collection (content that has been posted but not formally published) will not count as similar content.

Page	Instructions
View Similarity Check/iThenticate Results	<p><a href="#">Insert Special Character</a></p> <p>The results from each file deposited with Similarity Check/iThenticate from this submission are listed below. The 'Score' value is the overall Similarity Score returned by Similarity Check/iThenticate when the report is completed; click on the 'Completed' status link to view the full Similarity Report from Similarity Check/iThenticate.</p> <p>The largest Score value will be displayed as the overall</p> <p><a href="#">View Default Instructions</a>   <a href="#">Revert to Default Instructions</a></p>



# Configuration Steps: Similarity Check

PolicyManager > Submission Policies > Edit Article Types

### Edit Article Type

**Article Type:**   
Maximum Article Type name is 75 characters.  
Warning: changing the Article Type name will apply the name change to all submissions of this type, including previously submitted manuscripts/submissions

**Family:** Regular    **Editor Use Only**

**Hide** When you **Hide** an Article Type, the Article Type will be deactivated (not available for new manuscripts).

**Custom Metadata ID:** i  
  
[Select Custom Metadata ID](#)

Allow file uploads from arXiv.org server

**Similarity Check:**

- Send Reviewer PDF on Initial Submission
- Send Reviewer PDF on First Revision
- Send Reviewer PDF on Final Disposition to Accept ←

- Can be triggered automatically at several checkpoints





# Configuration Steps: Similarity Check

- Ex. Send Reviewer PDF on Initial Submission – automatic results and manual button appear in Technical Check step

Original Submission

View Submission

Technical Check History

Author Status

Similarity Check Results (8%) Duplicate Submission Check (67%)

**Proof this submission against the submission requirements listed in the Instructions for Authors.**

**STEPS**

(A) Request any changes from the author by typing in the "Technical Comments to Author" box . Please use the send-back text from the protocol

(B) Click "Send Back to Author" to request changes.

(C) If there are no corrections to request, use the radio button below to select "Technical Check Complete".

Technical Check Incomplete

Technical Check Complete

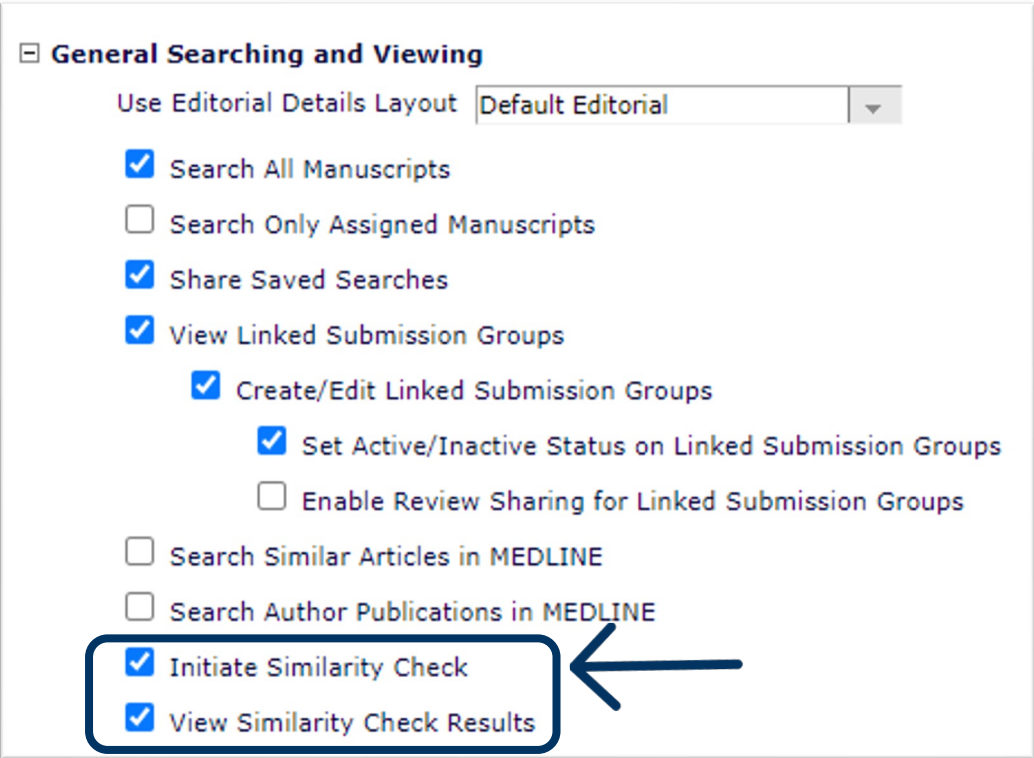
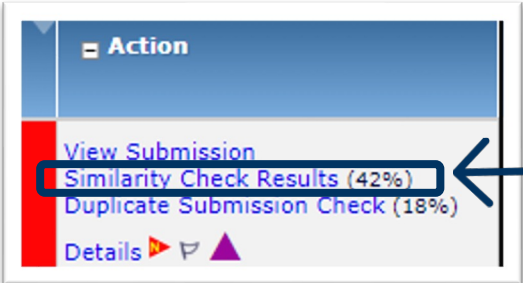
Cancel Send Back to Author Similarity Check: Reviewer PDF Save and Close





# Configuration Steps: Similarity Check

- RoleManager > Editor > General Searching and Viewing
- Authors and Reviewers can view if configured in RoleManager



Similarity Check/iThenticate History

Date:	Rev.	Triggered By	File Sent	Report Status	Score	Ignore Score	Submission Similarity Score: 42%
Oct 21, 2022	0	New Submission	S-22-29747.pdf	Completed	42	<input type="checkbox"/>	



# Duplicate Submission Check

- Authors are required to submit original papers
- Flags if the Corresponding Author of a submission has submitted any other manuscript within a configurable time frame
- Identifies submissions with a high degree of similarity
  - It is the Editor's role to determine what action should be taken with questionable submissions

Publications that are part of a Business Publisher Group signed up for Cross-Publication Enterprise Analytics Reporting may configure duplicate submission checking across all sites in the group



# Duplicate Submission Check

- Percent likelihood of duplicate submission displayed in Editor Action Menu
- Able to drill down for more information on potential duplicate submissions

Page: 1 of 1 (2 total submissions)

Action	Manuscript Number	Article Type	Section Category
<a href="#">Action Links</a> (84%)			
<a href="#">Action Links</a> (88%)			

View Submission

**Duplicate Submission Check (84%)**

Details

Initiate Discussion

History

Technical Check

File Inventory

Edit Submission

Send Back to Author

Remove Submission

Classifications

Set Final Disposition

Send E-mail

The results of a comparison between this submission and previously submitted manuscripts are listed below. A separate similarity score is shown for the Article Title, the list of Authors and the Abstract of a submission. The EM Duplicate Score is the highest weighted average for any of the submissions displayed below.

## Potential Duplicate Submissions

Manuscript/Submission Number	Initial Date Submitted	Revision	Current Status	Article Title	Authors	Article Title Similarity	Author Similarity	Abstract Similarity	EM Duplicate Score: 84%
I-2023-0009 <a href="#">View Submission Details</a>	02/09/2023 05:05:05	0	Manuscript Submitted	Workflow Assist - Revised Submission - Resubmitted	Andrew Walker; Scientist1 Researcher; Scientist2 Researcher	60% <div style="width: 60%; background-color: green;"></div>	100% <div style="width: 100%; background-color: red;"></div>	100% <div style="width: 100%; background-color: red;"></div>	
I-2023-0008 <a href="#">View Submission Details</a>	02/09/2023 05:03:10	0	Manuscript Submitted	Workflow Assist - Revised Manuscript - Initial Submission	Andrew Walker; Scientist1 Researcher; Scientist2 Researcher	50% <div style="width: 50%; background-color: green;"></div>	100% <div style="width: 100%; background-color: red;"></div>	100% <div style="width: 100%; background-color: red;"></div>	
I-2023-0005 <a href="#">View Submission Details</a>	02/04/2023 09:13:12	0	Required Reviews Completed	TaskAdept End-to-end Version 2	Andrew Walker; Scientist1 Researcher; Scientist2 Researcher	0% <div style="width: 0%; background-color: green;"></div>	100% <div style="width: 100%; background-color: red;"></div>	23% <div style="width: 23%; background-color: green;"></div>	



# Duplicate Submission Check: Score Calculation

	Similarity %	Weighted Score
Article Title Similarity = 40%	60%	24%
Author Similarity = 30%	100%	30%
Abstract Similarity = 30%	100%	30%
EM Duplicate Score		<b>84%</b>

The results of a comparison between this submission and previously submitted manuscripts are listed below. A separate similarity score is shown for the Article Title, the list of Authors and the Abstract of a submission. The EM Duplicate Score is the highest weighted average for any of the submissions displayed below.

## Potential Duplicate Submissions

Manuscript/Submission Number	Initial Date Submitted	Revision	Current Status	Article Title	Authors	Article Title Similarity	Author Similarity	Abstract Similarity
I-2023-0009 <a href="#">View Submission Details</a>	02/09/2023 05:05:05	0	Manuscript Submitted	Workflow Assist - Revised Submission - Resubmitted	Andrew Walker; Scientist1 Researcher; Scientist2 Researcher	60% <div style="width: 60%; background-color: green;"></div>	100% <div style="width: 100%; background-color: red;"></div>	100% <div style="width: 100%; background-color: red;"></div>
I-2023-0008 <a href="#">View Submission Details</a>	02/09/2023 05:03:10	0	Manuscript Submitted	Workflow Assist - Revised Manuscript - Initial Submission	Andrew Walker; Scientist1 Researcher; Scientist2 Researcher	50% <div style="width: 50%; background-color: green;"></div>	100% <div style="width: 100%; background-color: red;"></div>	100% <div style="width: 100%; background-color: red;"></div>
I-2023-0005 <a href="#">View Submission Details</a>	02/04/2023 09:13:12	0	Required Reviews Completed	TaskAdept End-to-end Version 2	Andrew Walker; Scientist1 Researcher; Scientist2 Researcher	0% <div style="width: 0%; background-color: green;"></div>	100% <div style="width: 100%; background-color: red;"></div>	23% <div style="width: 23%; background-color: green;"></div>

**EM Duplicate Score: 84%**



# Configuration: Duplicate Submission Check

PolicyManager > Submission Policies >  
Configure Duplicate Submission Check

### Configure Duplicate Submission Check

- If the Author has submitted a new manuscript within the number of days set below, a **D** symbol will appear next to the Author's name in the Editor folders New Submissions, New Submissions Requiring Assignment, Direct-to-Editor New Submissions and New Assignments. The Editor can then click the Author's name to see information about prior submissions.
- If a manuscript with a similar title, list of authors, or abstract has been previously submitted, a 'Duplicate Submission Check Results' link will be displayed to users with permission. Clicking the link will display a list of similar submissions.
  - You may select a minimum score used to select which potential duplicate submissions are displayed on the 'Duplicate Submission Check Results' page.
  - You may highlight scores that exceed a configured threshold.
  - An overall 'EM Duplicate Score' will be calculated, based on a weighted average of the Article Title (40%), the list of Authors (30%), and the Abstract (30%)

**Alert me when:**

- The same Corresponding Author has submitted a paper in the past  days
- A similar paper has been previously submitted.
  - Only display potential duplicate submissions that have an EM Duplicate Score that is  % or more
  - Highlight the EM Duplicate Score when it is  % or more

Page	Instructions
Duplicate Submission Check Results	<p>Insert Special Character</p> <p>The results of a comparison between this submission and previously submitted manuscripts are listed below. A separate similarity score is shown for the Article Title, the list of Authors and the Abstract of a submission. The EM Duplicate Score is the highest weighted average for any of the submissions displayed below.</p> <p><a href="#">View Default Instructions</a>   <a href="#">Revert to Default Instructions</a></p>

RoleManager > Editor >  
General Searching and Viewing

### General Searching and Viewing

Use Editorial Details Layout

- Search All Manuscripts
- Search Only Assigned Manuscripts
- Share Saved Searches
- View Linked Submission Groups
  - Create/Edit Linked Submission Groups
    - Set Active/Inactive Status on Linked Submission Groups
    - Enable Review Sharing for Linked Submission Groups
- Search Similar Articles in MEDLINE
- Search Author Publications in MEDLINE
- View Duplicate Submission Check Results



# Research Integrity Innovations

---

## Self Plagiarism

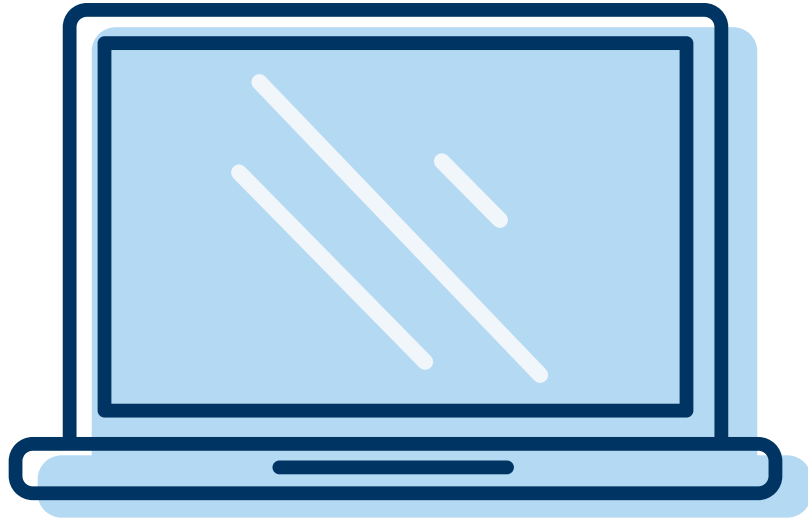
- Recycled written content is expected, if done in a legal way
- Researchers consider it a waste of time to rewrite things just to “pass” the iThenticate checks: *“Two hours editing the most boring part of the paper.”*
- Disclose: *“Substantial material in [this section] is recycled from our prior publication(s).”*

Resources: <https://textrecycling.org/resources/best-practices-for-researchers/>

<https://publicationethics.org/text-recycling-guidelines>

This material contains information that is proprietary and confidential to Aries Systems. It cannot be shared with third parties without Aries Systems' consent. ARIES SYSTEMS PROPRIETARY & CONFIDENTIAL. DO NOT COPY. DO NOT DISTRIBUTE.





# Research Integrity Innovations

*Reference Validation*



# Research Integrity Innovations

---

## Reference Validation

### **Reference Linking/Reference Cleanup**

- Formats and validates submitted bibliographic references against PubMed and CrossRef. Service powered by Inera's eXtyles

*This material contains information that is proprietary and confidential to Aries Systems. It cannot be shared with third parties without Aries Systems' consent. ARIES SYSTEMS PROPRIETARY & CONFIDENTIAL. DO NOT COPY. DO NOT DISTRIBUTE.*





# Reference Check

- Parses and links references to make copyediting more accurate and efficient



- Cannot use clean up without linking, can decouple
  - Run reference check on initial submission
  - Ref check and clean-up on acceptance

# Reference Check: Report Returned by Inera

515 REFERENCES:

- 516 <jrn>Ali, M. M., Jagadees, P. S. V., Lin, I.-I., & Hsu, J.-Y. (2012a). A neural network  
517 approaches to estimate tropical cyclone heat potential in the Indian Ocean. *IEEE Geoscience  
518 and Remote Sensing Letters*, 9, 1114–1117. doi:10.1109/LGRS.2012.2190491</jrn>
- 519 <jrn>Ali, M. M., Swain, D., & Weller, R. A. (2004). Estimation of ocean subsurface thermal  
520 structure from surface parameters: A neural network approach. *Geophysical Research  
521 Letters*, (31), L20308. doi:10.1029/2004GL021192.</jrn>
- 522 <jrn>Acharya, N., Shrivastava, N. A., Panigrahi, B. K., & Mohanty, U. C. (2013). Development  
523 of an artificial neural network based multi-model ensemble to estimate the northeast  
524 monsoon rainfall over south peninsular India: an application of extreme learning machine.  
525 *Climate Dynamics*. doi:10.1007/s00382-013-1942-2.</jrn>
- 526 <jrn>Buizza, R. (1997). Potential forecast skill of ensemble prediction and spread and skill  
527 distributions of the ECMWF ensemble prediction system. *Monthly Weather Review*, 125,  
528 99–119. doi:10.1175/1520-0493(1997)125<0099:PFSOEP>2.0.CO;2</jrn>
- 529 <jrn>Chakraborty, A., & Krishnamurti, T. N. (2006). Improved seasonal climate forecasts of the  
530 south Asian summer monsoon using a suite of 13 coupled ocean–atmosphere models.  
531 *Monthly Weather Review*, 134, 1697–1721. doi:10.1175/MWR3144.1</jrn>

## Comments

New

- eXtyle PubMed Reference ...  
Correction  
Medline cannot find the journal "IEEE Geoscience and Remote Sensing Letters". Please check the journal name. (Ref. "Ali, Jagadees, Lin, Hsu.")
- eXtyle CrossRef Reference ...  
Correction  
CrossRef reports the issue should be "20", not "31". (Ref. "Ali, Swain, Weller, 2004")
- eXtyle PubMed Reference ...  
Correction  
Medline indexes "Geophysical Research Letters" but cannot find a listing for this reference. Please check the reference for accuracy. (Ref. "Ali,")



# Configuration: Reference Check

- Policy Manager > Edit Submission Items:
  - Choose Manuscript and/or any other submission items to be reference checked
  - Check “Include this Item Type for Reference Checking”
- ProduXion Manager > Configure Reference Checking:
  - Choose Reference Linking Method
  - Select “Reference Linking Only” or “Reference Cleanup and Linking” for workflow trigger points
  - Choose whether source file is carried forward
  - Customize instructions for Authors
- Contact your Account Coordinator to enable
  - Requires contract amendment





# Research Integrity Innovations

*Researcher Identity*

# Research Integrity Innovations

---

## Research Identity

- **ORCiD**
  - Open Researcher and Contributor Identifier (ORCID)
  - Unique identifier for people
- **Identity Confidence Check**
  - Verifies unknown researchers with confidence rating to prevent fraudulent peer review
- **Co-Author Verification**
  - Requires the Other Authors listed on a submission to verify their status as contributors to the manuscript
- **Authorship Change Alert**
  - Alert flag is automatically surfaced if author list changes

*This material contains information that is proprietary and confidential to Aries Systems. It cannot be shared with third parties without Aries Systems' consent. ARIES SYSTEMS PROPRIETARY & CONFIDENTIAL. DO NOT COPY. DO NOT DISTRIBUTE.*



# ORCID

- **Open Researcher and Contributor ID (ORCID)**
- Allows researchers to claim their own research record with an orcid.org profile
- Disambiguates people with similar names
- Can help provide some confidence on user identity (especially for Authors and Reviewers)
- Link ORCID record with EM account
- Many uses in EM:
  - Single Sign-On
  - Co-Author Verification
  - Reviewer Recognition

- Resources:
  - <https://orcid.org/>
  - <https://www.ariessys.com/vimeo-video/requiring-orcid-id-for-submitting-authors/>



# Linking ORCID with EM

**E-mail Address \***

If entering more than one e-mail address, use a semi-colon between each address (e.g., joe@thejournal.com;joe@yahoo.com)  
Entering a second e-mail address from a different e-mail provider decreases the chance that SPAM filters will trap e-mails sent to you from online systems. [Read more](#)

**ORCID**  [Fetch](#)

[What is ORCID?](#)

Elysia Williams (0000-0003-4787-3063) - Google Chrome  
orcid.org/0000-0003-4787-3063

**id**  
https://orcid.org/  
**0000-0003-4787-3063**

Is this you? [Sign in to start editing](#) [Printable version](#)

Name  
**Elysia Williams**

Also known as  
Elysia Alleman

**Activities** [Collapse all](#)

**Education and qualifications (2)** [Sort](#)

**Harvard University Graduate School of Arts and Sciences: Cambridge, MA, US**

2008-09 to 2010-05 | M.A. Education [Show more detail](#)

Source: Elysia Williams

ORCID Search - Google Chrome  
editorialmanager.com/demoew/OrcidSearch.aspx

**ORCID Search**

This page lists public ORCID profiles which match the information supplied.

Click on Select to retrieve the ORCID identifier from that profile. Click on the identifier to view that profile on the ORCID site.

Start a new search by typing a name, institution, email address or any personal identifier into the supplied field and clicking Search.

[Go to the ORCID web site](#)

[Search](#)

	Given Name	Family Name	Other Names	Institutions	ORCID
Select	Elysia	Williams	Elysia Alleman		<a href="#">0000-0003-4787-3063</a>

Showing Results 1-1 Results per page 10 [Close](#)




# Identity Confidence Check (ICC)


- Helps publications guard against academic fraudulent peer review/questionable authorship
- Checks and rates the confidence in personal details supplied by or for people whose work may be under consideration by the publication (as Corresponding Authors, Co-Authors, or Reviewers suggested by Authors)
- The ICC looks for signs that the personal information supplied is trustworthy
- You define the signs!








# Identity Confidence Check

Action	Manuscript Number	Article Type	Article Title	Author Name	Initial Date Submitted	Status Date	Current Status
<ul style="list-style-type: none"><li>View Submission Details</li><li>Initiate Discussion History</li><li>Submit Early Decision</li><li>Technical Check</li><li>File Inventory</li><li>Edit Submission</li><li>Send Back to Author</li><li>Remove Submission</li><li>Classifications</li><li>Set Final Disposition</li><li>Send E-mail</li><li>Linked Submissions</li><li>Similar Articles in Scopus</li><li>Scopus Author Search</li><li>Scopus Corresponding Author Search</li><li>Scopus Title Search</li></ul>		Review	Beets: Friend or Foe?	Dwight Schrute 	07 Jun 2023	07 Jun 2023	

Pass 

Alert 


High alert 

ICC not run 

RoleManager > Flag Icons > View Identity Confidence Check Results





# Identity Confidence Check

**Tina Fleischer** 






[Search Google Scholar](#)

The Identity Confidence Check has never been run for this person. Click the 'Check Now' button to run the Identity Confidence Check.

 [Check Now](#) [People Activity Details](#) [Close](#)

**Tina Fleischer** 

[Search Google Scholar](#)

<b>Institution</b>
 Aries Systems Corporation
<b>Country/Region</b>
 UNITED STATES
<b>EM Activity</b>
 This person has not yet completed EM activity for this publication
<b>ORCID Activity</b>
 <a href="#">0000-0001-7496-9058</a> 

[Recalculate Now](#) [Override and Trust this Person](#) [People Activity Details](#) [Close](#)



# Configuration: Identity Confidence Check

PolicyManager > General Policies > Configure Identity Confidence Check

## Configure Identity Confidence Check

EM can be configured to carry out an Identity Confidence Check on Corresponding Authors, Co-Authors and Reviewers suggested by the Author on submission. This check looks for signs that the personal information supplied is trustworthy, and displays a visual indication of the confidence level next to the person's name in key folders early in the editorial process. The Identity Confidence Check is run when:

- A new submission is received by the publication
- A revised submission is received by the publication
- Co-Author verification is carried out
- Co-Author metadata is changed
- An EM user with a score updates their personal information

This is informational to Editors only, and does not impede the editorial workflow in any way.

You can customize the Identity Confidence Check by adjusting each Factor's Level of Importance. You can also exclude one or more Factors from the calculation, or exclude a particular party (Corresponding Author, Co-Authors and/or Suggested Reviewers) using the appropriate checkboxes. Click the 'Configure' link to learn more about the logic behind each Factor and how to refine the parameters to suit your publication's needs. In order to include Email Domain and Country/Region in the Identity Confidence Check, you must configure at least one exception to be evaluated. Once you have adjusted the parameters, select the 'Enable Identity Confidence Check' checkbox to activate the feature. ([less...](#))

Enable Identity Confidence Check

Factor	Level of Importance 1 = lowest 5 = highest	Corresponding Author	Co-Authors	Suggested Reviewers **	
Email Domain	5	<input checked="" type="checkbox"/>	<input checked="" type="checkbox"/>	<input checked="" type="checkbox"/>	<a href="#">Configure</a>
Institution *	3	<input checked="" type="checkbox"/>	<input checked="" type="checkbox"/>	<input type="checkbox"/>	<a href="#">Configure</a>
Country or Region	2	<input checked="" type="checkbox"/>	<input checked="" type="checkbox"/>	<input type="checkbox"/>	<a href="#">Configure</a>
EM Activity	5	<input checked="" type="checkbox"/>	<input type="checkbox"/>	<input checked="" type="checkbox"/>	<a href="#">Configure</a>
ORCID Activity	1	<input checked="" type="checkbox"/>	<input type="checkbox"/>	<input type="checkbox"/>	<a href="#">Configure</a>

\* Institution is excluded from the Identity Confidence Check if Institution Name Normalization is not enabled.

\*\* Suggested Reviewers are excluded from the Identity Confidence Check if no Article Types are configured with the Suggest Reviewers submission step displayed.



# Configuration: Identity Confidence Check

## Configure Email Domain Exceptions for Identity Confidence Check

Please enter any email domain extensions you want specified as exceptions. Wildcards (\*) may be used to extend the breadth of email domains covered. For example, yahoo.co\* includes the following domains: yahoo.com, yahoo.co.jp, yahoo.co.fr, etc. Entry of \*.ac.\* includes academic institution domains in many countries. The information entered below should include everything after the @ for the email domain.

Email addresses evaluated with these domains are allocated a pass, alert or high alert on the Identity Confidence Scorecard. If a person has an email domain that is not specified on this page, the email address is ignored by the Identity Confidence Check for that person.

You must click the 'Submit' button to apply any changes to the email domain exceptions.

### Pass

\*.ac.\*  
\*.ariessys.com  
\*.edu  
\*.gov  
\*.mil

[Remove](#) [Edit](#)  
[Remove](#) [Edit](#)  
[Remove](#) [Edit](#)  
[Remove](#) [Edit](#)  
[Remove](#) [Edit](#)

### Alert

aol.com  
gmail.com  
hotmail.com  
yahoo.\*

[Remove](#) [Edit](#)  
[Remove](#) [Edit](#)  
[Remove](#) [Edit](#)  
[Remove](#) [Edit](#)



# Configuration: Identity Confidence Check

## Configure Institution Assessment Option for Identity Confidence Check

Institution Name Normalization (INN) must be enabled in order for Institution to be included in the Identity Confidence Check. To confirm that INN is enabled for this site, click [here](#).

When INN is enabled and a user selects or enters an Institution recognized by Ringgold in EM, a Ringgold ID is assigned behind the scenes. Since the Ringgold ID is a universally recognized identifier in the publishing industry, the Identity Confidence Check views a person associated with a Ringgold institution positively and a 'Pass' score is applied towards the Identity Confidence Score.

If the Institution is not supplied for the person being evaluated, Institution cannot be assessed and is ignored by the Identity Confidence Check. If the Institution name is populated but is not associated with a Ringgold ID, you may designate below whether an 'Alert' or 'High Alert' is applied toward the overall score.

To learn more about Ringgold Identifiers go to <https://www.ringgold.com/identify/>.

- Alert  
 High Alert

Cancel Submit

## Configure ORCID Assessment Option for Identity Confidence Check

The Identity Confidence Check views a person with an authenticated ORCID in EM positively and a 'Pass' score is applied towards the Identity Confidence Score.

If the ORCID is not supplied for the person being evaluated, ORCID cannot be assessed and is ignored by the Identity Confidence Check. If a person does not have an authenticated ORCID in EM, you may designate below whether an 'Alert' or 'High Alert' is applied towards the overall score.

- Alert  
 High Alert

Cancel Submit



# Configuration: Identity Confidence Check

## Configure Country/Region Exceptions for Identity Confidence Check

Below you may designate which countries/regions are allocated an Alert or High Alert designation when the person being evaluated for the Identity Confidence Check is associated with that country/region. If all countries/regions are listed in the Pass column, country is not evaluated in the Identity Confidence Check.

You can modify the lists by selecting all, or choosing one or more values in one list and clicking the appropriate 'Move To' button. On a PC, multiple values may be selected by holding down the 'Ctrl' key on your keyboard, while using the mouse to select the desired items in the selection box. On a Mac, hold down the 'Command' key while using the mouse to select the desired items..

You must click the 'Submit' button to apply any changes to the country/region exception.

Pass	Alert	High Alert
<a href="#">Select All / Clear All</a>	<a href="#">Select All / Clear All</a>	<a href="#">Select All / Clear All</a>
AUSTRIA (at) AZERBAIJAN (az) BAHAMAS (bs) BAHRAIN (bh) BANGLADESH (bd) BARBADOS (bb) BELGIUM (be) BELIZE (bz) BENIN (bj) BERMUDA (bm) BHUTAN (bt) BOLIVIA (bo) BOSNIA AND HERZEGOVINA (ba) BOTSWANA (bw) BOUVET ISLAND (bv) BRAZIL (br) BRITISH INDIAN OCEAN TERRITORY (io) BRUNEI DARUSSALAM (bn) BULGARIA (bg) BURKINA FASO (bf) BURUNDI (bi) CAMBODIA (kh) CAMEROON (cm) CANADA (ca) CAPE VERDE (cv) CAYMAN ISLANDS (ky) CENTRAL AFRICAN REPUBLIC (cf) CHAD (td) CHILE (cl)		BELARUS (by) RUSSIAN FEDERATION (ru)
<a href="#">Move to Pass</a>	<a href="#">Move to Alert</a>	<a href="#">Move to High Alert</a>





# Configuration: Identity Confidence Check

## Configure EM Activity Exceptions for Identity Confidence Check

The following elements are examined when the Identity Confidence Check evaluates EM Activity. People with activity in these categories are viewed positively in the overall Identity Confidence Score.

Always trust Editors - If a person has an Editor Role or Editor assignment history, s/he will automatically be assessed a 'Pass' overall score and no other factors will be assessed for this person.

1. Person currently has an Editor Role or historical Editor assignments on this publication
2. Person has authored  or more accepted submissions on this publication
3. Person has submitted  or more invited papers on this publication
4. Person has completed  or more reviews on this publication

Cancel

Submit



# Identity Confidence Check: Override Score

**Tina Fleischer**

Search Google Scholar

**Institution**  
 Aries Systems Corporation

**Country/Region**  
 UNITED STATES

**EM Activity**  
 This person has not yet completed EM activity for this publication

**ORCID Activity**  
 0000-0001-7496-9058

Recalculate Now

Are you sure you want to override the Identity Confidence score and trust this person?  
OK Cancel

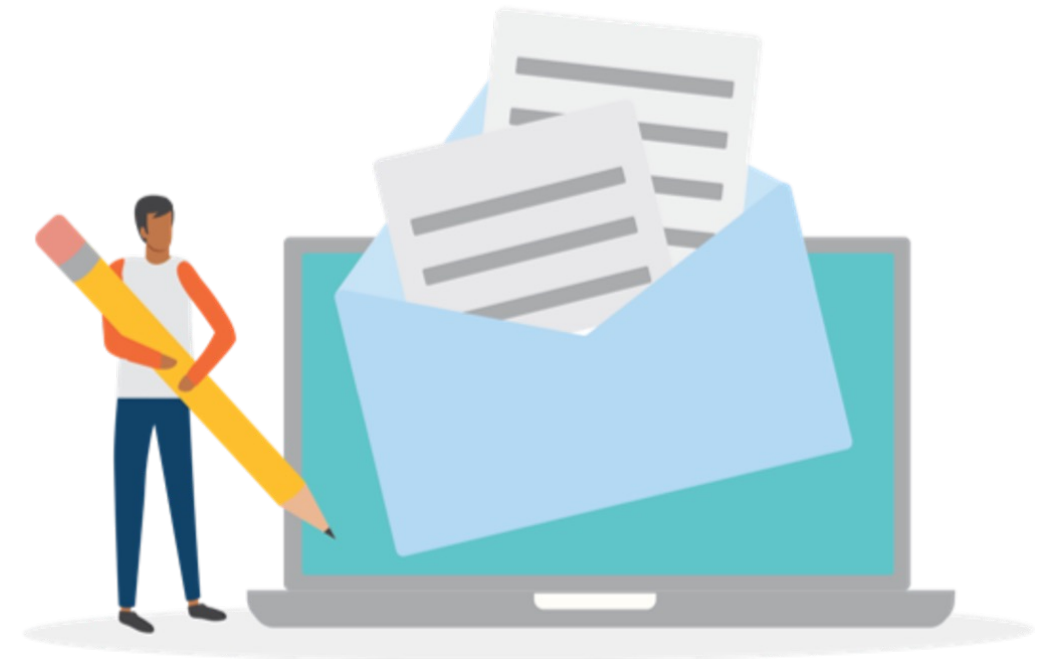
Action	Article Type	Article Title	Author Name
Details History View Transferred Information View Transferred Decision Letter File Inventory Edit Submission Send Back to Author Remove Submission Send E-mail		Test 3/12/20	Tina Fleischer

RoleManager >  
Flag Icons >  
Override Identity  
Confidence Score



# Co-Author Verification

- A publication may require the other Authors (co-Authors, Contributing Authors) listed on a submission to verify their status as contributors to the manuscript
- Requests for verification may be sent either for a new submission or a revised submission
- Other Authors may also be asked to complete a questionnaire



# Configuration: Co-Author Verification

Policy Manager > E-mail and Letter Policies > Edit Letters

Author - Other Author Verification

General

Author - Notify Other Authors

Re: %ARTICLE\_TITLE%  
by %CORRAUTHOR%

Dear %TITLE% %LAST\_NAME%,

You have been listed as a contributing author for the above manuscript. Please verify your contribution by clicking one of the below links.

Yes, I am affiliated: %OTHERAUTH\_VERIFY\_DEEP\_LINK%

No, I am not affiliated: %OTHERAUTH\_DECLINE\_DEEP\_LINK%




Thank you,

%JOURNALFULLTITLE%



# Authorship Change Alert

Page: 1 of 1 (1 total submissions)

Action	Manuscript Number	Article Type	Article Title	Author Name	Initial Date Submitted	Status Date	Current Status	Editor Decision
<ul style="list-style-type: none"> <li><a href="#">View Submission Details</a> </li> <li><a href="#">Initiate Discussion</a></li> <li><a href="#">Duplicate Submission</a></li> <li><a href="#">History</a></li> <li><a href="#">Technical Check</a></li> <li><a href="#">File Inventory</a></li> <li><a href="#">Edit Submission</a></li> <li><a href="#">Send Back to Author</a></li> <li><a href="#">Classifications</a></li> <li><a href="#">Set Final Disposition</a></li> <li><a href="#">View Reviews and Comments</a></li> <li><a href="#">View Related Submissions</a></li> <li><a href="#">Similar Articles in Scopus</a></li> <li><a href="#">Scopus Author Search</a></li> <li><a href="#">Scopus Corresponding Author Search</a></li> <li><a href="#">Scopus Title Search</a></li> <li><a href="#">Send E-mail</a></li> <li><a href="#">Linked Submissions</a></li> </ul>	DEMOEW-2020-000001R1	Original Study	Austrian Film History	mary mary   1	20 Feb 2020	06 Jun 2023	Revised Manuscript Submitted	Revise

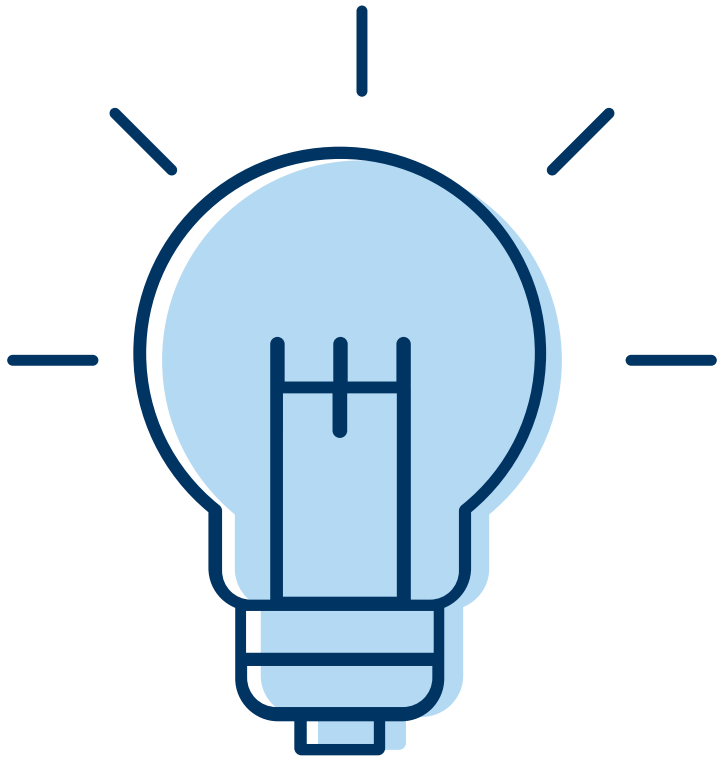
Author List has been modified



# Transparency

- Growing number of predatory journals
  - "Pay to Play" or "Pay to Publish"
  - Promise rapid decisions and forgo rigorous peer review
- Fake peer Reviewers and peer review fraud
  - Pressure to publish
  - Peer review rings
  - Large number of retractions – 5,000+ retractions for Fake Peer Review; 320+ retractions in 2023 so far





# Research Integrity Innovations

*Transparency*

# Research Integrity Innovations

---

Transparency

- **Convey**
  - Conflict of Interest disclosure
- **Open and/or Transparent Peer Review**
  - Check for Reviewers/Editors
  - Assessment process is visible to readers

*This material contains information that is proprietary and confidential to Aries Systems. It cannot be shared with third parties without Aries Systems' consent. ARIES SYSTEMS PROPRIETARY & CONFIDENTIAL. DO NOT COPY. DO NOT DISTRIBUTE.*



# Convey

- A web-based centralized disclosure repository
- Allows individuals to create free accounts and input conflict of interest information into a single system
- Streamlines the disclosure process for Authors and editorial staff
- Equipped with industry-standard disclosure forms to eliminate redundancies and maintain consistency
- COI policies vary between journals and are unevenly applied. Allows for a more standard, automated approach of soliciting COI information
- Helps get disclosure info early in the peer review process to support integrity.
  - Editors can retrieve updated COIs in EM from Convey in real-time

- Publications that utilize Editorial Manager need to individually subscribe to the Convey service
- COI policy requirements customized within Convey system



# Convey

View Conflict of Interest Disclosures for Submission - Google Chrome

editorialmanager.com/demoawconvey/ViewConveyCoiDisclosure.aspx?docid=52

## Conflict of Interest Disclosures for Manuscript Number: DEMO.2022.0002 "Test Convey 2"

Close

All available Conflict of Interest disclosure information for the authors of this submission is displayed below.

[Request Updated COI Data](#) **Last Updated: 05/17/2023 14:37:04**

Name	Submission Status
Alison Sousa	Mar 1, 2022

Discloser

Identifier: f02c70cd-f8c8-4b6f-a181-0e965491d5a1 Requested Date: Mar 1, 2022

[Show Full Details](#) [Download PDF](#)

Summary of Interests

A World Celiac Community Foundation (Independent Contractor - Other)





# Configuration Steps: Convey

PolicyManager > Submission Policies > Edit Article Types

**Conflict of Interest Check:**  Retrieve COI Disclosures for this article type.  
Automation options for retrieving COI Disclosures:

- New Submission Sent to Publication
- Technical Check is Completed
- First Editor Assigned
- Revised Submission Sent to Publication

To manually request COI Disclosures, do *not* check any of the automation options. Editors will need permission configured in RoleManager

- Contact your Account Coordinator if interested in using Convey



# Configuration Steps: Convey

RoleManager > Author/Reviewer/Editor

### Edit Role Definition

Role Name: Author

Check the functions that this role is permitted to perform.

---

- View Status Date
- View Current Status
- View Other Author Status
  - Manage Other Authors
    - Edit Other Author E-mail Address
- Allow Access to Reviewer Names and Reviews:
  - After Final Decision of Accept, Reject or Reject and Transfer
  - After First Decision
- Send Ad Hoc E-mail
- View Author Related Correspondence History
- View Author COI Disclosures

### Permissions for Pending Assignments and Completed Assignments

- View Status History
- View Correspondence History
- View Corresponding Author
- View Author COI Disclosures
  - View Unblinded Version
  - View Blinded Version

Reviewer role can be configured two ways:

- Blinded
- Un-blinded



# Configuration Steps: Convey

**Configure Conflict of Interest Disclosure**

The instructions displayed for Editors, Reviewers, and Authors when viewing COI data in Editorial Manager may be customized below. Submit this page to save your changes.

Page	Instructions
View Conflict of Interest Disclosure (Editor View)	<p><a href="#">Insert Special Character</a></p> <p>All available Conflict of Interest disclosure information for the authors of this submission is displayed below.</p> <p style="text-align: right;">View Default Instructions <span style="float: right;">Revert to Default Instructions</span></p>
View Conflict of Interest Disclosure (Reviewer View)	<p><a href="#">Insert Special Character</a></p> <p>All available Conflict of Interest disclosure information for the authors of this submission is displayed below.</p> <p style="text-align: right;">View Default Instructions <span style="float: right;">Revert to Default Instructions</span></p>
View Conflict of Interest Disclosure (Author View)	<p><a href="#">Insert Special Character</a></p> <p>All available Conflict of Interest disclosure information for the authors of this submission is displayed below.</p> <p style="text-align: right;">View Default Instructions <span style="float: right;">Revert to Default Instructions</span></p>

Retrieve disclosures in PDF format (in addition to the default XML format)

Policy Manager > Submission Policies > Configure Conflict of Interest Disclosure:

- Ability to customize instructions
- Request PDF of disclosures (in addition to standard XML file)



# Configuration Steps: Convey

Policy Manager > General Policies > Define Details Page Layouts

62	COI Disclosure [Section Heading]	<input type="checkbox"/>
63	COI Disclosure*	<input checked="" type="checkbox"/>
<a href="#">Update Order</a>		

- Link is now on Details page:

COI Disclosure	
Conflict of Interest:	<a href="#">View COI Disclosure</a>
<a href="#">Cancel</a> <a href="#">Save</a> <a href="#">Save and Close</a>	



# Transparent Peer Review

- Based on Author opt-in, posting peer-review information (Reviewer comments, Author feedback) for public access (outside of EM)
  - Generally published alongside the submitted article
- Can be anonymized or not (Open Peer Review)
- Growing in popularity



# Why Transparent Peer Review?

- **Check for Reviewers/Editors**

- Is their feedback constructive?
- Any conflicts of interest?
- Are there any biases, conscious or unconscious?

- **Assessment process is visible to readers**

- Increased accountability
- Can see how Author improved their paper due to the exchange of ideas
- Elevates the value of peer review; credit/recognition

- **Early Career Researchers (ECRs)**

- Example of what a good review looks like
- Model for own reviews
- Better context for how article fits into the wider field of research



# Reviewer's View: Transparent Peer Review

### Manuscript Rating

Please answer the questions below to help us determine the scope of this manuscript.

**\*The subject addressed in this article is worthy of investigation.**

N/A    1    2    3

**\*The information presented was new.**

N/A    1    2    3

**\*The article is appropriate for this journal.**

N/A    1    2    3

#### Instructions

If you do not agree to have your review published, please select "no".

### Review Questions

Do you agree to have your anonymized review published alongside the article? [\[Instructions\]](#)

### Reviewer Comments to Author



# Configuration: Transparent Peer Review

PolicyManager > Reviewer and Editor Form Policies > Create/Edit Custom Review Questions

## Create Custom Review Questions for Reviewers and Editors

Listed below are the custom questions which may be displayed as part of a Review Form and/or an Editor Form. Questions can be used on Review Forms and Editor Forms, but a question can only be added once per form.

A question may be removed unless it has been used. If a question has been used but is now obsolete, it may be inactivated by clicking the Edit link and selecting the Hide checkbox. Hidden questions are displayed at the bottom of the list in gray italic text.

To add a new question, click the Add button.



### Question

Are you willing to review the revision of this manuscript?

Would you like to nominate the article for Editor's Choice, which would allow the article to be free to access on our website?

Why not?

Are you an experienced researcher who would be willing to mentor an early career researcher who is new to peer review?

Are you an early career researcher who would like to be matched with a peer review mentor?

Are you mentoring another reviewer?

### Actions

Edit

Edit

Remove Edit

Edit

Edit

Remove Edit





# Configuration: Transparent Peer Review

PolicyManager > Reviewer and Editor Form Policies > Create/Edit Review Forms

### Add Review Form

**Review Form Name:**

Hide - When you **Hide** a Reviewer Form, the form will be deactivated (not available for use with any Article Types).

Current Custom Review Question List	Required for Submission	Visible to Reviewers	Visible to Author
<i>No Custom Review Questions have been added to this Form</i>			
<div style="display: flex; align-items: center; justify-content: center;"><div style="border: 2px solid #004a87; border-radius: 10px; padding: 5px 15px; display: inline-block; background-color: #2c3e50; color: white; text-decoration: none;">+ Add Custom Review Question</div><div style="margin-left: 10px; font-size: 2em;">←</div></div>			



# Configuration: Transparent Peer Review

PolicyManager > Reviewer and Editor Form Policies > Create/Edit Review Forms

As part of this manuscript review, did you participate as a mentor or mentee?

Did your mentee have a thorough grasp of the subject matter?


Did your mentee provide adequate feedback?

How would you rate this early career researcher's review?

Do you agree to have your anonymized review published alongside the article?

[Select All](#) | [Clear All](#)

Current Custom Review Question List	Required for Submission	Visible to Reviewers
<b>Select Custom Review Questions for Review Form</b>		
No Custom Review Questions Available		
+ Add Custom Review Question		

 Custom Review Questions available for use on the Review Form are displayed below. Select the questions you wish to add and click the 'Save' icon to add them to the Review Form.

[Select All](#) | [Clear All](#)



# Configuration: Transparent Peer Review

PolicyManager > Reviewer and Editor Form Policies > Create/Edit Custom Review Questions

Cancel Submit

**Question:** [Insert Special Character](#)  
Do you agree to have your anonymized review published alongside the article?

**Instructions for Reviewer or Editor Response:** [Insert Special Character](#)  
If you do not agree to have your review published, please select "no".

**Hide:** When you **Hide** a Custom Review Question, the question is deactivated (not available for use with new Review or Editor Forms).

**Available for Decision Letter Merging:** When you select this checkbox, both the question and answer can be merged into the decision letter using the %REVIEW\_QUESTIONS\_AND\_RESPONSES% or %RESPONSES\_AND\_INDIVIDUAL\_COMMENTS\_TO\_AUTHOR% merge fields (for Reviewers) or the %EDITOR\_QUESTIONS\_AND\_RESPONSES% and %EDITOR\_RESPONSES\_AND\_COMMENTS\_TO\_AUTHOR% merge fields (for Editors). Editors will be able to de-select individual responses before the Author is notified. The Reviewer question and answer will also be inserted into Reviewer Invitation/Assignment Letters by the %REVIEWER\_RESPONSES\_AND\_INDIVIDUAL\_COMMENTS\_TO\_AUTHOR% merge field, for those reviews explicitly selected by the Editor for inclusion.

**Response Type:** Yes/No

Cancel Submit



# Configuration: Transparent Peer Review

PolicyManager >

Reviewer and Editor Form Policies >

Match Review Forms to Article Types and Reviewer Roles

**Match Review Forms to Article Types and Reviewer Role:**

In the grid below, please specify the Review Form to use for each Article Type / Reviewer Role combination. You can use the "Filter By" option to select a Review Form to be set for New or Revised submissions. Checking "Use Manuscript Rating Questions" turns on Manuscript Rating Questions for Reviewers of the specified Article Type and Reviewer Role.

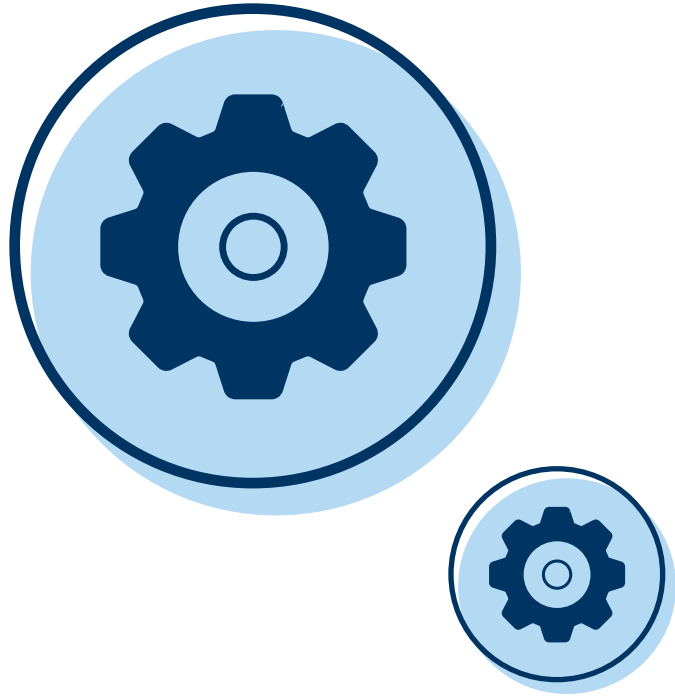
Cancel Submit

Filter By: All Reviewer Roles All Article Types Set Displayed New Review Form to: Default Review Form

Display Manuscript Rating Question Responses to Author for displayed Reviewer Roles/Article Types Set Displayed Revised Review Form to: Default Review Form

Reviewer Role / Article Type	Reviewer	Statistics Reviewer	Mentee Reviewer
Original Study	New: Transparent Review Form <input checked="" type="checkbox"/> Use Manuscript Rating Questions Select <input type="checkbox"/> Display Responses to Author	New: Default Review Form Default Review Form Mentee Reviewer Form Mentee Reviewer Form 2 Mentor Reviewer Form Transparent Review Form Author	New: Mentee Reviewer Form <input checked="" type="checkbox"/> Use Manuscript Rating Questions Select <input type="checkbox"/> Display Responses to Author
	Revised: Mentee Reviewer Form 2	Revised: Default Review Form	Revised: Mentee Reviewer Form
Editorial	New: Default Review Form <input type="checkbox"/> Use Manuscript Rating Questions Select <input type="checkbox"/> Display Responses to Author	New: Default Review Form <input type="checkbox"/> Use Manuscript Rating Questions Select <input type="checkbox"/> Display Responses to Author	New: Default Review Form <input type="checkbox"/> Use Manuscript Rating Questions Select <input type="checkbox"/> Display Responses to Author
	Revised: Default Review Form	Revised: Default Review Form	Revised: Default Review Form





# Resources

*What's Next and Resources*

# What is Next?

- **Transparent Peer Review**
  - Transmittal of review using Manuscript Exchange Common Approach (MECA) Export
- **STM Integrity Hub integration**
  - Piloting Duplicate Submission tool and Paper Mill checker
- **Mentorship in Peer Review**
  - Increasing transparency
  - Giving credit to early career researchers
- **The role of AI...?**



# Resources

- Committee on Publishing Ethics ([COPE](#))
- Aries Blog & Video Tutorials:
  - [Author/Reviewer Verification with Identity Confidence Check](#)
  - [Automating Research COI Disclosures with Convey](#)
  - [Preventing Manuscript Redundancy with Duplicate Submission Check](#)
  - [Similarity Check: Automated Plagiarism Detection](#)
  - [Automated Reference Check](#)
  - [Soliciting ORCID iDs in Editorial Manager](#)
  - [Automated Crystallography Check via checkCIF](#)
- Aries Webinar Library:
  - [Measuring Research Quality, Professionalism, Reproducibility in Editorial Workflow](#)
  - [Practicing Ethical Publishing to Support Research Integrity](#)
  - [Expanding Connections Within the Aries Ecosystem](#)
  - [Panel Discussion: Manuscript Evaluation Services](#)
- Your Account Coordinator

## Video Library

Browse helpful videos on Editorial Manager and ProduXion Manager



The Aries Ecosystem



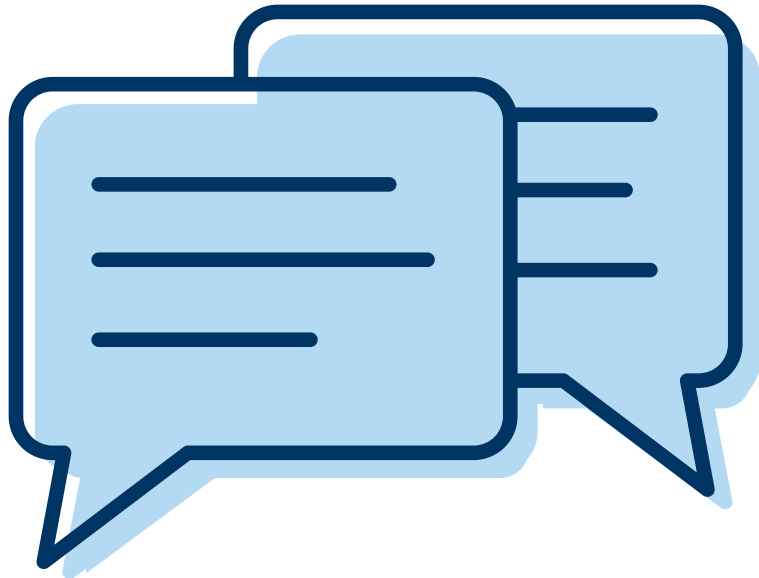
Automated Disclosure Workflows through Convey



Soliciting ORCID iDs



Duplicate Submission Detection



# Questions?



# Thank you!

---

Stay Connected

Elysia Williams  
Senior Account Manager,  
Client Services  
Ewilliams@ariessys.com

*This material contains information that is proprietary and confidential to Aries Systems. It cannot be shared with third parties without Aries Systems' consent. ARIES SYSTEMS PROPRIETARY & CONFIDENTIAL. DO NOT COPY. DO NOT DISTRIBUTE.*

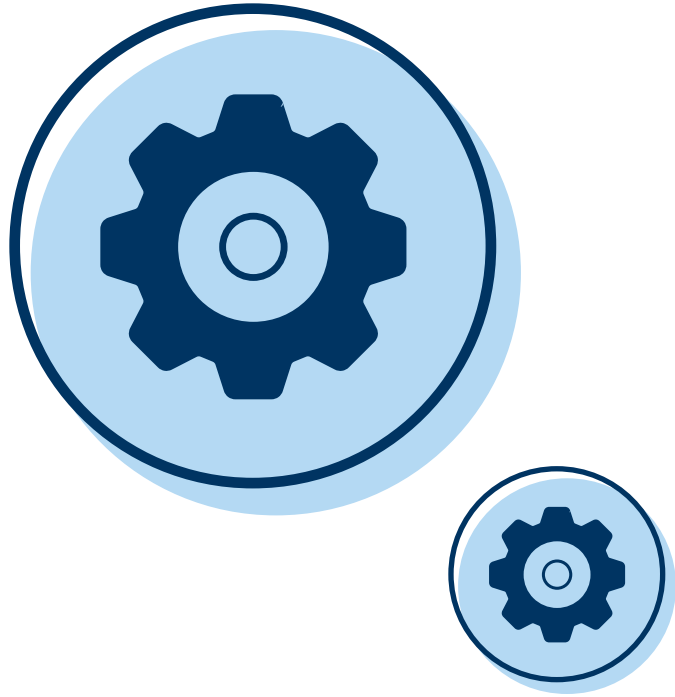




50 High Street, Suite 21  
North Andover, MA 01845 USA

[www.ariessys.com](http://www.ariessys.com)

*This material contains information that is proprietary and confidential to Aries Systems. It cannot be shared with third parties without Aries Systems' consent. ARIES SYSTEMS PROPRIETARY & CONFIDENTIAL. DO NOT COPY. DO NOT DISTRIBUTE.*



# Appendix

# Appendix - Tools

Tool	Provider	Aries Cost	Partner Cost
Dimensions Research Integrity Precheck	Partner	No fee	Fees apply
SciScore	Partner	No fee	Fees apply
CheckCIF	Partner	No fee	No fee
Similarity Check	Partner	No fee	Fees apply
Duplicate Submission Check	Aries	No fee	n/a
Reference Linking/Reference Cleanup	Partner	Fees apply	No fee
ORCID	Partner	No fee	No fee
Identity Confidence Check	Aries	No fee	n/a
Co-author verification	Aries	No fee	n/a
Authorship Change Flag	Aries	No fee	n/a
Convey	Partner	No fee	Fees apply
Open and/or Transparent Peer Review	Aries	No fee	n/a

